

# EXTRACTIVE SURGERY



## RESOLVING THE PRESENT, DESIGNING THE FUTURE

Removing a tooth is always an extreme measure that is usually adopted to resolve a painful situation for into real surgery with the need to create an access the patient. Even the simplest extractions demand point through the gum and minimize the amount the most careful maneuvers, aiming at preserving of sacrificed bone. Being minimally invasive and the bone as much as possible and not compromising extremely precise requires a broad range of superior high-performance instruments, including a large variety of levers that meet all potential needs.

However, experienced professionals and medical literature alike report cases requiring far more complex procedures. A molar broken off at the gum line, an included or semi-included wisdom tooth, a non-erupting molar: an extraction can turn





EXTRACTING FORCEPS  
serrated tips



S0100-1

0100-1	1
0100-17	17
0100-18	18
0100-79	79
0100-67A	67A
0100-51A	51A
0100-13	13
0100-22	22



1  
17.5 cm  
0100-1  
upper incisors and canines



2  
17 cm  
0100-2  
upper incisors and canines



3  
17 cm  
0100-3  
overlapping upper incisors and canines



4  
15.5 cm  
0100-4  
lower incisors and canines



7  
16.5 cm  
0100-7  
upper incisors and upper premolars



8  
16 cm  
0100-8  
lower premolars

EXTRACTING FORCEPS  
serrated tips



S0100-2

0100-1	1
0100-7	7
0100-17	17
0100-18	18
0100-4	4
0100-13	13
0100-22	22
0100-86C	86C



13  
16 cm  
0100-13  
lower premolars



17  
16 cm  
0100-17  
upper right molars



18  
16.5 cm  
0100-18  
upper left molars



18A  
16.5 cm  
0100-18A  
upper molars



20  
16 cm  
0100-20  
lower wisdom teeth



21  
16 cm  
0100-21  
lower molars

EXTRACTING FORCEPS  
serrated tips

EXTRACTING FORCEPS  
serrated tips



19  
15 cm  
0100-19  
upper wisdom teeth



22  
15 cm  
0100-22  
lower molars



22L Routurier  
17.5 cm  
0100-22L  
left lower molars  
and wisdom teeth



22R Routurier  
17.5 cm  
0100-22R  
lower right molars  
and wisdom teeth



23  
15 cm  
0100-23  
lower right molars



24  
15 cm  
0100-24  
left lower molars



29  
17.5 cm  
0100-29  
upper roots



29N  
17.5 cm  
0100-29N  
upper roots and incisors

EXTRACTING FORCEPS  
serrated tips



30  
17 cm  
0100-30  
upper roots



31  
16 cm  
0100-31  
lower roots and incisors



33  
15 cm  
0100-33  
lower roots



33A  
15 cm  
0100-33A  
lower roots



33L  
15 cm  
0100-33L  
lower roots



38A  
15 cm  
0100-38A  
fractured or decayed  
lower teeth

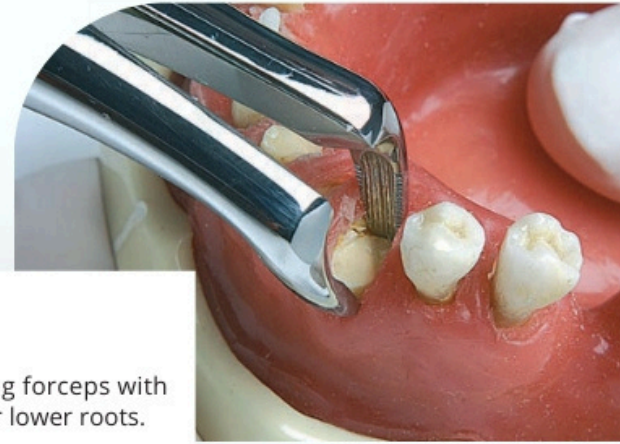


41  
19 cm  
0100-41  
upper roots

EXTRACTING FORCEPS  
serrated tips



43A  
16.5 cm  
0100-43A  
fractured or decayed  
upper teeth



0100-45  
Curved extracting forceps with  
serrated rims for lower roots.



44  
18.5 cm  
0100-44  
upper roots



45  
18.5 cm  
0100-45  
lower roots



46  
18.5 cm  
0100-46  
lower roots



46L  
19 cm  
0100-46L  
lower roots

EXTRACTING FORCEPS  
serrated tips



48  
18.5 cm  
0100-48  
upper roots



49  
18.5 cm  
0100-49  
upper roots



51L  
18.5 cm  
0100-51L  
upper roots



51  
18 cm  
0100-51  
upper roots



51A  
17.5 cm  
0100-51A  
upper roots



EXTRACTING FORCEPS  
serrated tips



51LX  
19 cm  
0100-51LX  
upper roots



52  
18 cm  
0100-52  
upper roots  
and canines



54  
17 cm  
0100-54  
for separating  
upper molars



55  
16.5 cm  
0100-55  
for separating  
upper molars



56  
15.5 cm  
0100-56  
for separating  
lower molars



59  
15 cm  
0100-59  
lower roots



59L  
16 cm  
0100-59L  
lower incisor roots

EXTRACTING FORCEPS  
serrated tips



60  
15 cm  
0100-60  
lower roots



65L  
17 cm  
0100-65L  
upper left molars



65R  
17 cm  
0100-65R  
upper right molars



66L  
17 cm  
0100-66L  
upper left molars



66R  
17 cm  
0100-66R  
upper right molars



67  
18.5 cm  
0100-67  
upper wisdom teeth



67A  
18.5 cm  
0100-67A  
upper wisdom teeth



67 1/2 L  
18.5 cm  
0100 - 67/L  
upper left wisdom teeth



67 1/2 R  
18.5 cm  
0100 - 67/R  
lower right incisor roots

EXTRACTING FORCEPS  
serrated tips

EXTRACTING FORCEPS  
serrated tips



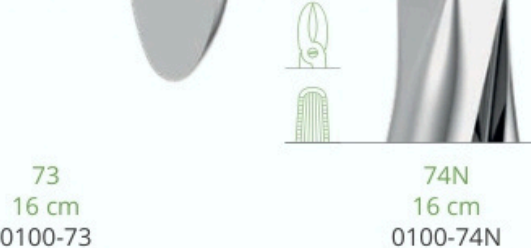
68  
17.5 cm  
0100-68  
lower roots



74  
16 cm  
0100-74  
lower roots



74M  
16 cm  
0100-74M  
lower roots



74N  
16 cm  
0100-74N  
lower roots



EXTRACTING FORCEPS  
serrated tips



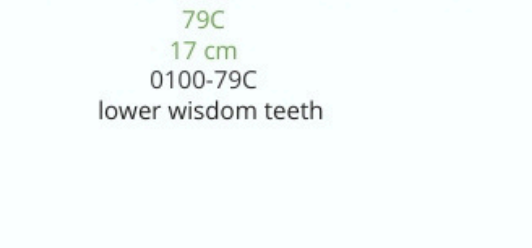
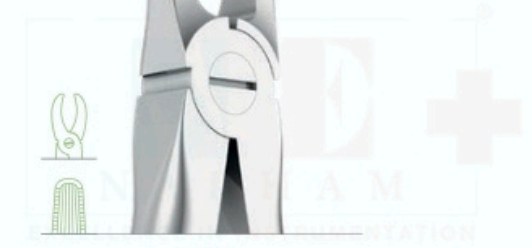
75  
16 cm  
0100-75  
lower canines and premolars



79  
17 cm  
0100-79  
lower wisdom teeth



79A  
17 cm  
0100-79A  
lower wisdom teeth



79C  
17 cm  
0100-79C  
lower wisdom teeth



EXTRACTING FORCEPS  
without serrated tips

EXTRACTING FORCEPS  
without serrated tips



86 1/2 L Routurier  
17.5 cm  
0100-86/L  
left lower wisdom teeth



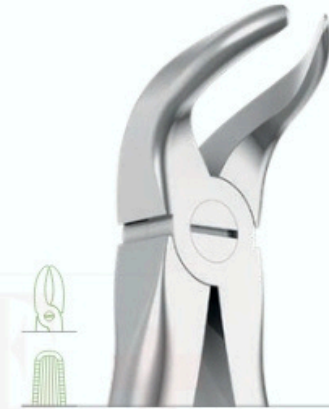
86 1/2 R Routurier  
17.5 cm  
0100-86/R  
lower right wisdom teeth



86C  
16 cm  
0100-86C  
lower molars



86W White  
16.5 cm  
0100-86W  
for lower last molar



87  
16 cm  
0100-87  
lower decayed molars or  
broken crowns



166 Trotter  
17 cm  
0100-166  
universal extracting forceps  
for upper teeth, in particular  
molars and premolars

EXTRACTING FORCEPS  
serrated tips



89  
18 cm  
0100-89  
upper right molars

90  
18 cm  
0100-90  
upper left molars

99  
16 cm  
0100-99  
lower molars with  
broken crowns

EXTRACTING FORCEPS  
serrated tips



121 Ogden-Felsch  
18 cm  
0100-121  
upper wisdom teeth

151 ½  
19.5 cm  
01 00-151/  
upper roots

145  
19 cm  
0100-145  
lower roots

107  
16.5 cm  
0100-107  
upper canines

346  
18.5 cm  
0100-346  
lower roots

168 Trotter  
16.5 cm  
0100-168  
upper canines

EXTRACTING FORCEPS  
without serrated tips



167 Trotter  
16 cm  
0100-167  
universal extracting forceps for lower  
teeth, in particular molars and premolars

serrated tips



169 Trotter  
16 cm  
0100-169  
upper wisdom teeth



359  
16 cm  
0100-359  
lower roots



349  
19 cm  
0100-349  
upper roots

EXTRACTING FORCEPS - SSLADY  
serrated tips



1  
16 cm  
W0160-1  
upper incisors  
and canines



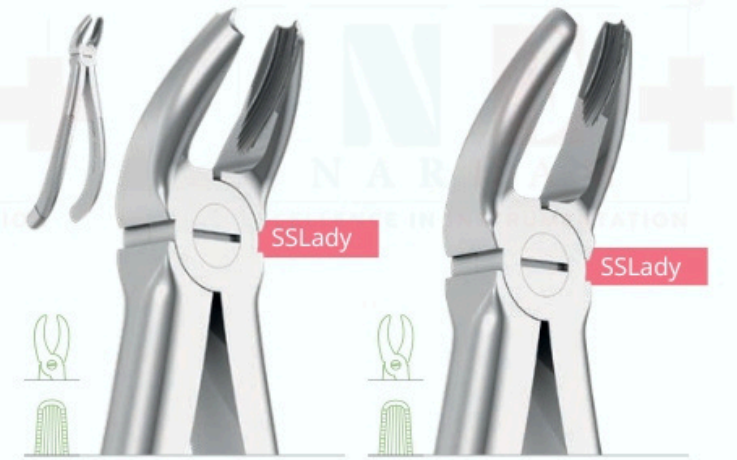
2  
16 cm  
W0160-2  
upper incisors and canines

4  
14.5 cm  
W0160-4  
lower incisors and canines



7  
15.5 cm  
W0160-7  
upper incisors  
upper premolars

13  
14 cm  
W0160-13  
lower premolars



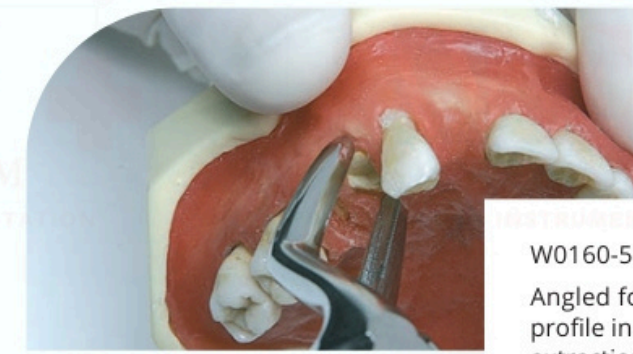
17  
15 cm  
W0160-17  
upper right molars

18  
15.5 cm  
W0160-18  
upper left molars

EXTRACTING FORCEPS - SSLADY  
serrated tips

EXTRACTING FORCEPS - SSLADY  
serrated tips

without serrated tips



**INSTRUMENTATION**  
W0160-51A  
Angled forceps with retention profile indicated for the extraction of upper roots.



22  
14 cm  
W0160-22  
lower molars

33  
13.5 cm  
W0160-33  
lower roots



45  
16 cm  
W0160-45  
lower roots

51A  
17 cm  
W0160-51A  
upper roots



67A  
17 cm  
W0160-67A  
upper wisdom teeth

74  
14.5 cm  
W0160-74  
lower roots



21  
14.5 cm  
W0160-21  
lower molars



79  
15.5 cm  
W0160-79  
lower wisdom teeth



145  
16 cm  
W0160-145  
lower roots



86C  
14.5 cm  
W0160-86C  
lower molars



151 1/2  
17.5 cm  
W0160-151/  
upper roots

EXTRACTING FORCEPS - MEAD PATTERN  
serrated tips



1  
17 cm  
0104-1  
universal extracting forceps  
for upper incisors and canines



2  
16.5 cm  
0104-2  
upper molars



3  
15 cm  
0104-3  
lower incisors,  
premolars and roots



4  
15 cm  
0104-4  
lower molars

EXTRACTING FORCEPS - AMERICAN PATTERN  
without serrated tips



5 Physick  
17.5 cm  
0120-5  
lower wisdom teeth



6  
17 cm  
0120-6  
separating forceps



10S  
19 cm  
0120-10S  
upper molars



16  
16.5 cm  
0120-16  
lower molars



17  
17.5 cm  
0120-17  
lower molars

EXTRACTING FORCEPS - AMERICAN PATTERN  
without serrated tips

EXTRACTING FORCEPS - AMERICAN PATTERN  
without serrated tips



18L Harris  
18 cm  
0120-18L  
upper left molars



18R Harris  
18 cm  
0120-18R  
upper right molars

23  
17.5 cm  
0120-23  
lower molars



53R  
18.5 cm  
0120-53R  
upper right molars

53L  
18.5 cm  
0120-53L  
upper left molars



65  
19 cm  
0120-65  
upper incisors and roots



69 Tomes  
18.5 cm  
0120-69  
upper and lower roots

88R Nevius  
18.5 cm  
0120-88R  
upper right molars



88L Nevius  
18.5 cm  
0120-88L  
upper left molars

101 Hull  
15.5 cm  
0120-101  
deciduous teeth

EXTRACTING FORCEPS - AMERICAN PATTERN  
without serrated tips



150 Cryer  
18 cm  
0120-150  
upper incisors, premolars, roots



150S Cryer  
15.5 cm  
0120-150S  
upper teeth  
(for children)

151 Cryer  
18.5 cm  
0120-151  
lower incisors,  
premolars, roots



151S Cryer  
15 cm  
0120-151S  
lower teeth  
(for children)

222  
18.5 cm  
0120-222  
lower wisdom teeth

EXTRACTING FORCEPS - AMERICAN PATTERN - SSLADY  
without serrated tips



5 Physick  
16.5 cm  
W0121-5  
lower wisdom teeth



6  
16.5 cm  
W0121-6  
separating forceps

10S  
18 cm  
W0121-10S  
upper molars



16  
16 cm  
W0121-16  
lower molars

17  
16.5 cm  
W0121-17  
lower molars



W0121-5

EXTRACTINGFORCEPS - AMERICAN PATTERN - SSLADY  
without serrated tips

EXTRACTINGFORCEPS - AMERICAN PATTERN - SSLADY  
without serrated tips



18L Harris  
16 cm  
W0121-18L  
upper left molars



18R Harris  
16 cm  
W0121-18R  
upper right molars



23  
16 cm  
W0121-23  
lower molars



53R  
17 cm  
W0121-53R  
upper right molars



53L  
17 cm  
W0121-53L  
upper left molars



65  
18 cm  
W0121-65  
upper incisors and roots



69 Tomes  
17 cm  
W0121-69  
upper and lower roots



88R Nevius  
17.5 cm  
W0121-88R  
upper right molars



88L Nevius  
17.5 cm  
W0121-88L  
upper left molars



101 Hull  
16 cm  
W0121-101  
deciduous teeth

EXTRACTING FORCEPS - AMERICAN PATTERN - SSLADY  
without serrated tips

EXTRACTING FORCEPS - ANATOMICALLY SHAPED HANDLE  
serrated tips



150 Cryer  
16.5 cm  
W0121-150  
upper incisors, premolars, roots



150S Cryer  
16 cm  
W0121-150S  
upper teeth  
(for children)

151 Cryer  
16.5 cm  
W0121-151  
lower incisors,  
premolars, roots



151S Cryer  
16.5 cm  
W0121-151S  
lower teeth  
(for children)

222  
17 cm  
W0121-222  
lower wisdom teeth



1  
17 cm  
0130-1  
upper incisors and canines



2  
17 cm  
0130-2  
upper incisors and canines

4  
15.5 cm  
0130-4  
lower incisors and canines



7  
17 cm  
0130-7  
upper premolars

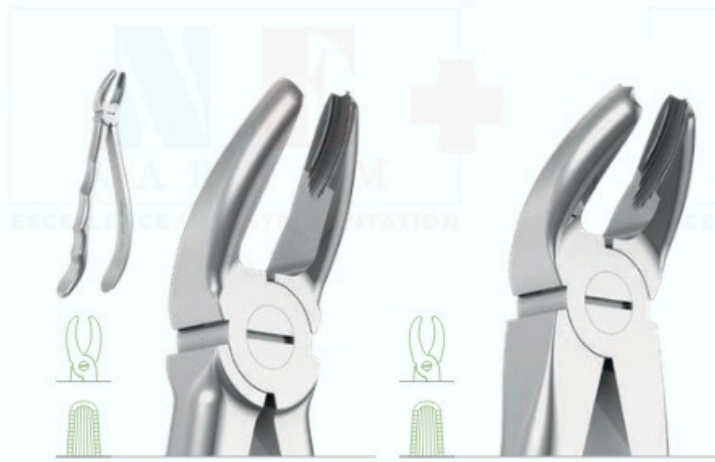
13  
14.5 cm  
0130-13  
lower premolars

EXTRACTING FORCEPS - ANATOMICALLY SHAPED HANDLE  
serrated tips

EXTRACTING FORCEPS - ANATOMICALLY SHAPED HANDLE  
serrated tips

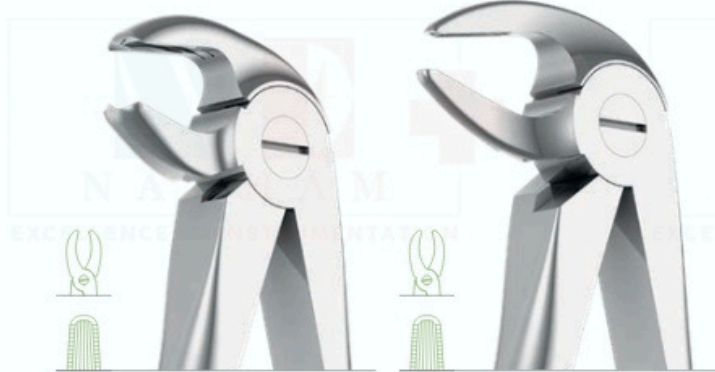


17  
16.5 cm  
0130-17  
upper right molars



18  
17 cm  
0130-18  
upper left molars

21  
16.5 cm  
0130-21  
lower molars



22  
15 cm  
0130-22  
lower molars

33  
15 cm  
0130-33  
lower roots



45  
19 cm  
0130-45  
lower roots

51A  
18.5 cm  
0130-51A  
upper roots

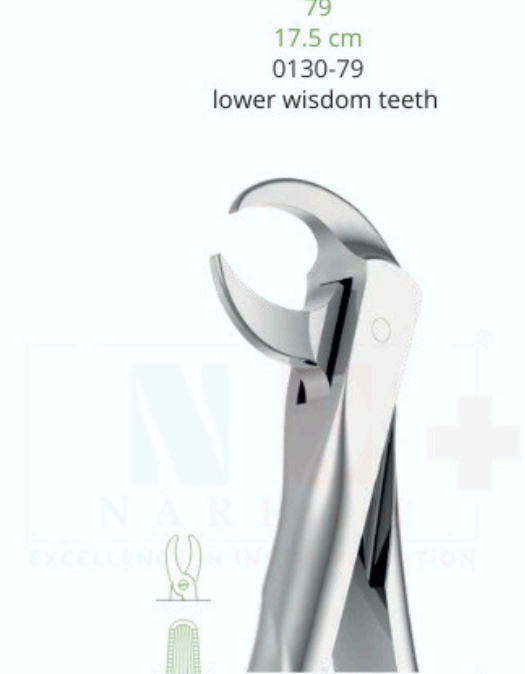


67A  
18.5 cm  
0130-67A  
upper wisdom teeth

74  
15.5 cm  
0130-74  
lower roots



79  
17.5 cm  
0130-79  
lower wisdom teeth



86C  
15.5 cm  
0130-86C  
lower molars

EXTRACTING FORCEPS - ANATOMICALLY SHAPED HANDLE  
serrated tips



89  
17.5 cm  
0130-89  
upper right molars



90  
17.5 cm  
0130-90  
upper left molars

145  
19 cm  
0130-145  
lower roots



151 1/2  
19.5 cm  
0130-151/  
upper roots

349  
19 cm  
0130-349  
upper roots



359  
15.5 cm  
0130-359  
lower roots

EXTRACTING FORCEPS FOR CHILDREN  
serrated tips



13S  
14.5 cm  
0110-13S  
lower premolars



22S  
14 cm  
0110-22S  
lower molars

30S  
16 cm  
0110-30S  
upper incisors and roots



33S  
14 cm  
0110-33S  
lower roots

37  
15 cm  
0110-37  
upper incisors and roots

EXTRACTING FORCEPS FOR CHILDREN  
serrated tips



S0110

0110-37	37
0110-39	39
0110-39R	39R
0110-39L	39L
0110-51S	51S
0110-13S	13S
0110-30S	30S
0110-33S	33S
0110-22S	22S
0110-38	38

EXTRACTING FORCEPS FOR CHILDREN - KLEIN PATTERN  
serrated tips



S0112

0112-1	1
0112-2	2
0112-3	3
0112-4	4
0112-5	5
0112-6	6
0112-7	7



2  
12.5 cm  
0112-2  
upper premolars

3  
13 cm  
0112-3  
upper molars



38  
14 cm  
0110-38  
lower incisors and canines



39  
16 cm  
0110-39  
upper molars

39R  
16 cm  
0110-39R  
upper right molars

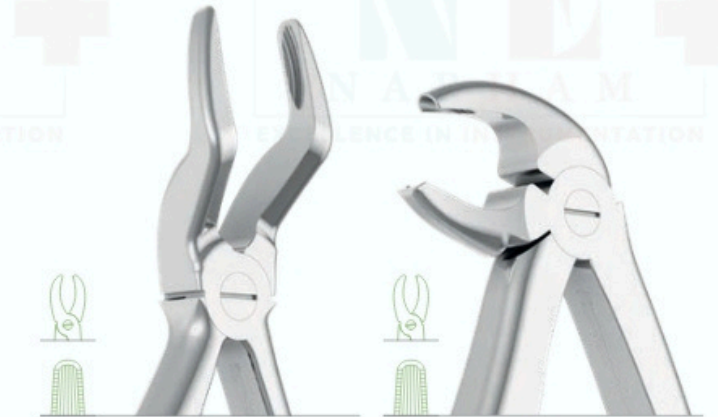


39L  
16 cm  
0110-39L  
upper left molars

51S  
17 cm  
0110-51S  
upper roots



1  
12 cm  
0112-1  
upper incisors



4  
13 cm  
0112-4  
upper roots

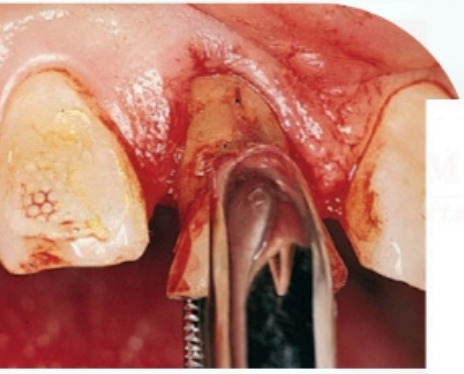
5  
13 cm  
0112-5  
lower incisors



6  
12.5 cm  
0112-6  
lower molars

7  
13 cm  
0112-7  
lower roots

EXTRACTING FORCEPS FOR ROOTS  
serrated tips



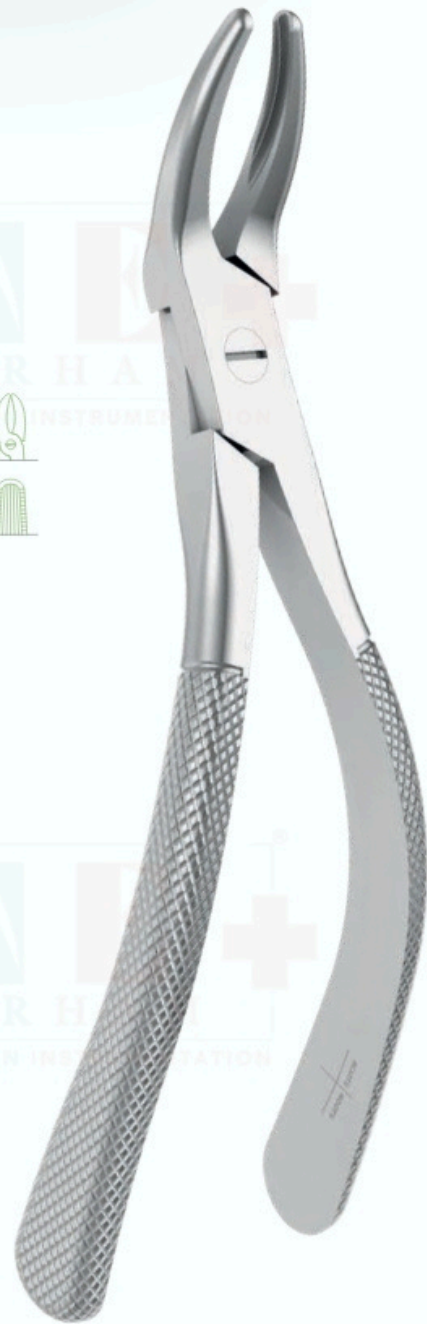
0101-1

Witzel extracting forceps are extremely versatile instruments that can be used to extract both teeth and roots.

The serrated rims, curved shape and slim profile make them effective on roots, preventing unwanted fractures.

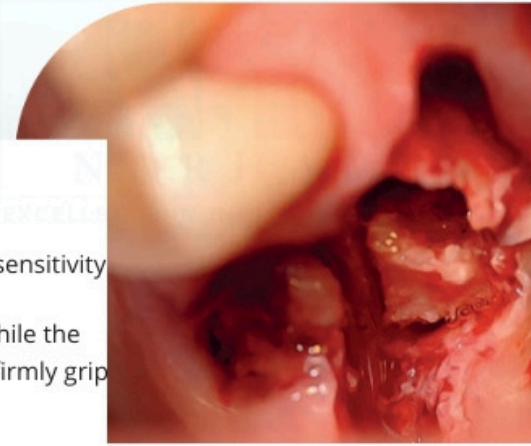


1 Witzel  
16.5 cm  
0101-1  
lower roots



2 Witzel  
16 cm  
0101-2  
upper roots

ROOT AND SPLINTER FORCEPS  
without serrated tips



0102-1

These forceps are designed to amplify hand sensitivity and guarantee precision.

The scissor-like handle increases guidance while the narrow beaks make it possible to reach and firmly grip even small, deep root fragments.



1 Stieglitz  
14.5 cm  
0102-1  
root fragments



2 Stieglitz  
14 cm  
0102-2  
root fragments

BONE RONGEURS

BONE RONGEURS



Luer  
15 cm  
0103-10



Friedman  
14.5 cm  
0103-20



Mini Friedman  
12 cm  
0103-25



Cleveland 5  
16.5 cm  
0103-40



Cleveland-Gardner  
16.5 cm  
0103-45



Blumenthal  
15 cm  
0103-30



Blumenthal  
13.5 cm  
0103-31



Blumenthal  
14 cm  
0103-32



Mead 1A  
16.5 cm  
0103-50

45°

90°

**BONE RONGEURS**  
multiple action



Mini-Ruskin  
15.5 cm  
0103-70



Beyer  
18 cm  
0103-71



**BONE/SOFT TISSUE NIPPER**  
small size for use in limited access areas



Goldman-Fox  
10 cm  
0103-60



**ROOT ELEVATORS WITH A STAINLESS STEEL HANDLE**



4.25 mm



1 Hyllin  
0234-1

3.6 mm



2 Hyllin  
0234-2

3.6 mm

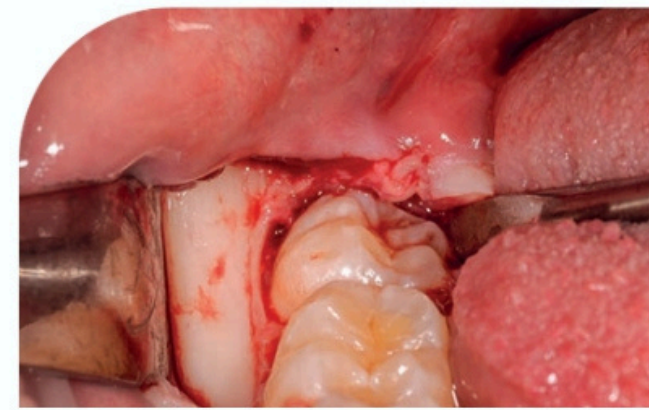


3 Hyllin  
0234-3

3.6 mm



4 Hyllin  
0234-4



0234-1

ATRAUMATIC LUXATORS - IDEAL  
periotomes for atraumatic extraction

ATRAUMATIC LUXATORS - IDEAL  
double-blade periostomes for atraumatic extraction

ROOT LEVER  
SET  
with a plastic  
handle



2  
0280-2R  
straight, 2 mm

3  
0280-3R  
straight, 3 mm

3  
0280-3C  
curved, 3 mm

5  
0280-5R  
straight, 5 mm

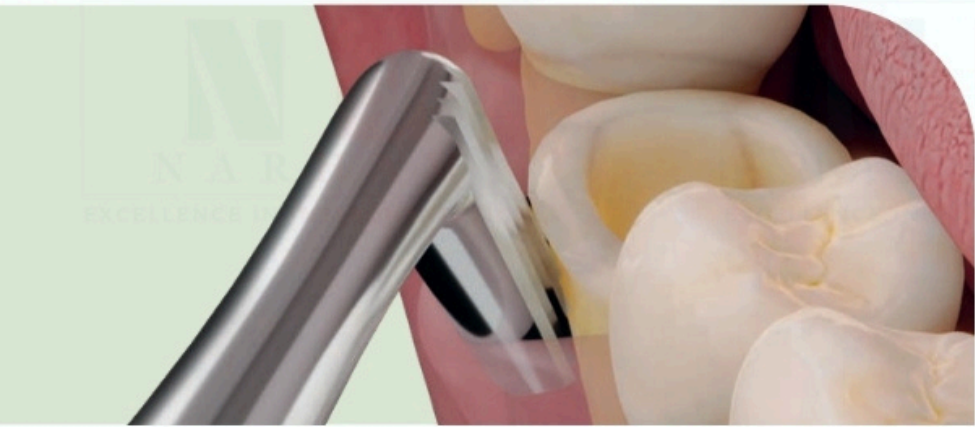
5  
0280-5C  
curved, 5 mm

3  
0280-3DF  
3 mm

5  
0280-5DF  
5 mm

S0280-4  
includes:  
0280 -3R  
0280 -3C  
0280-5R  
0280-5C

ROOT ELEVATORS WITH A STAINLESS STEEL HANDLE



0231-2



ROOT ELEVATORS WITH A STAINLESS STEEL HANDLE



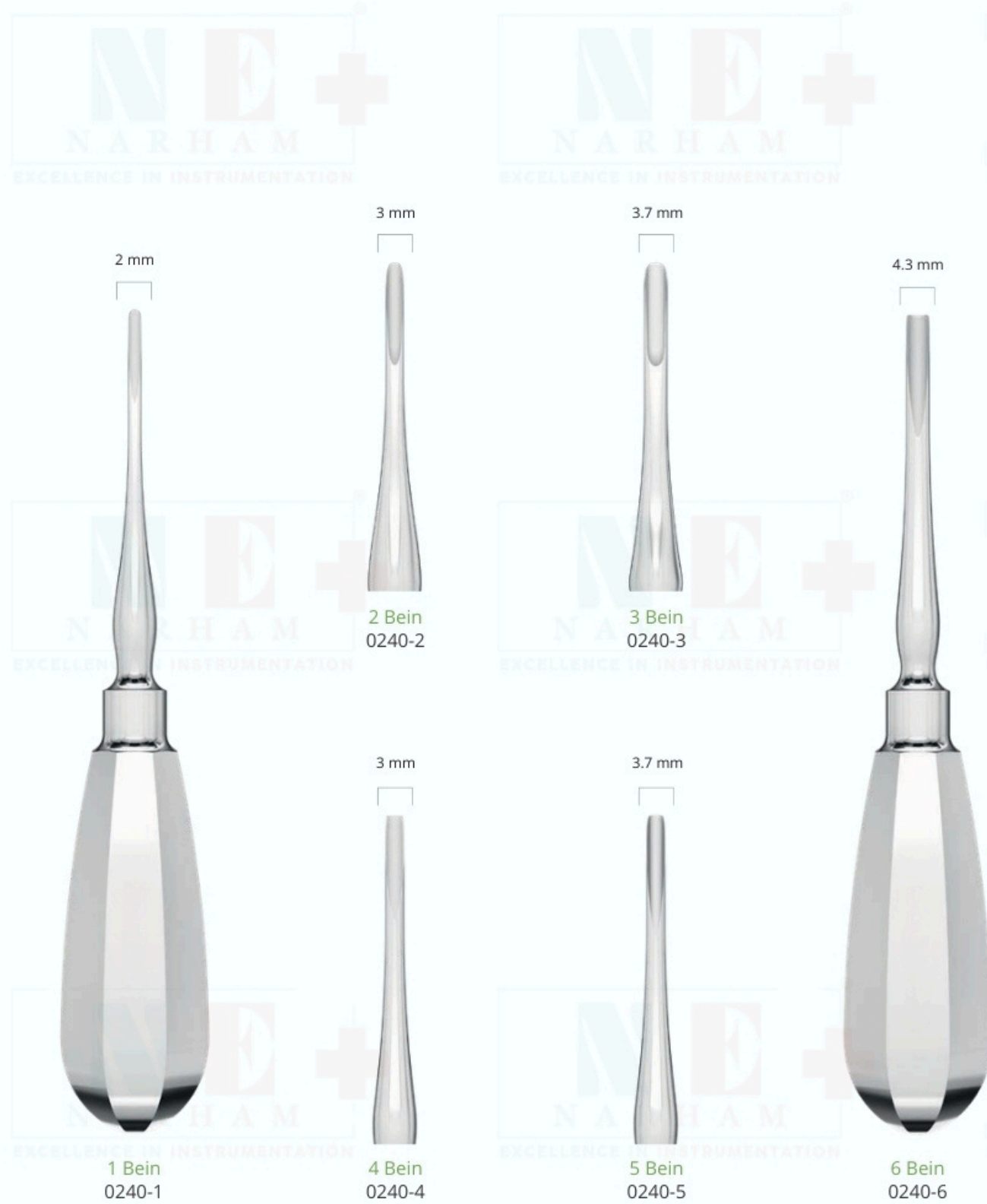
S0200-6

020 0 -1	1B
0200-4	4B
0201-2	2F
0201-3	3F
0220-44	44
0220-45	45



ROOT ELEVATORS WITH A STAINLESS STEEL HANDLE

ROOT ELEVATORS WITH A STAINLESS STEEL HANDLE



0200-2	2B
0200-3	3B
0200-4	4B
0201-2	2F
0201-3	3F
0291-1	1
0291-2	2
0291-3	3
0202-320	320
0202-321	321



ROOTELEVATORS WITH A STAINLESS STEEL HANDLE  
with helicoidal tips



024 4 -1	1K
0244-2	2K
0244-3	3K
0244-4	4K
0244-5	5K
0244-6	6K



ROOTELEVATORS WITH A STAINLESS STEEL HANDLE  
with helicoidal tips



ROOT ELEVATORS WITH A STAINLESS STEEL HANDLE

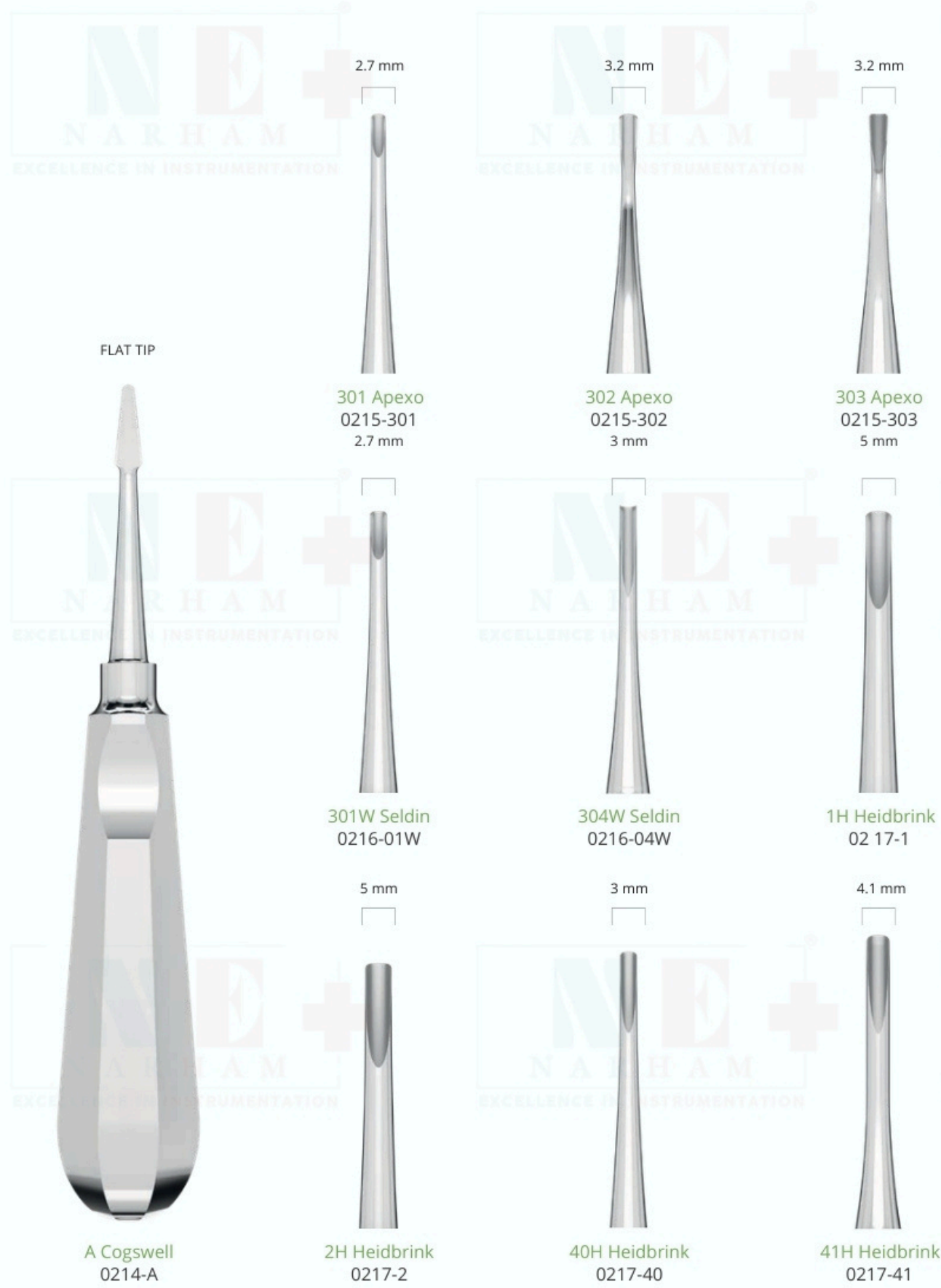


ROOT ELEVATORS WITH A STAINLESS STEEL HANDLE

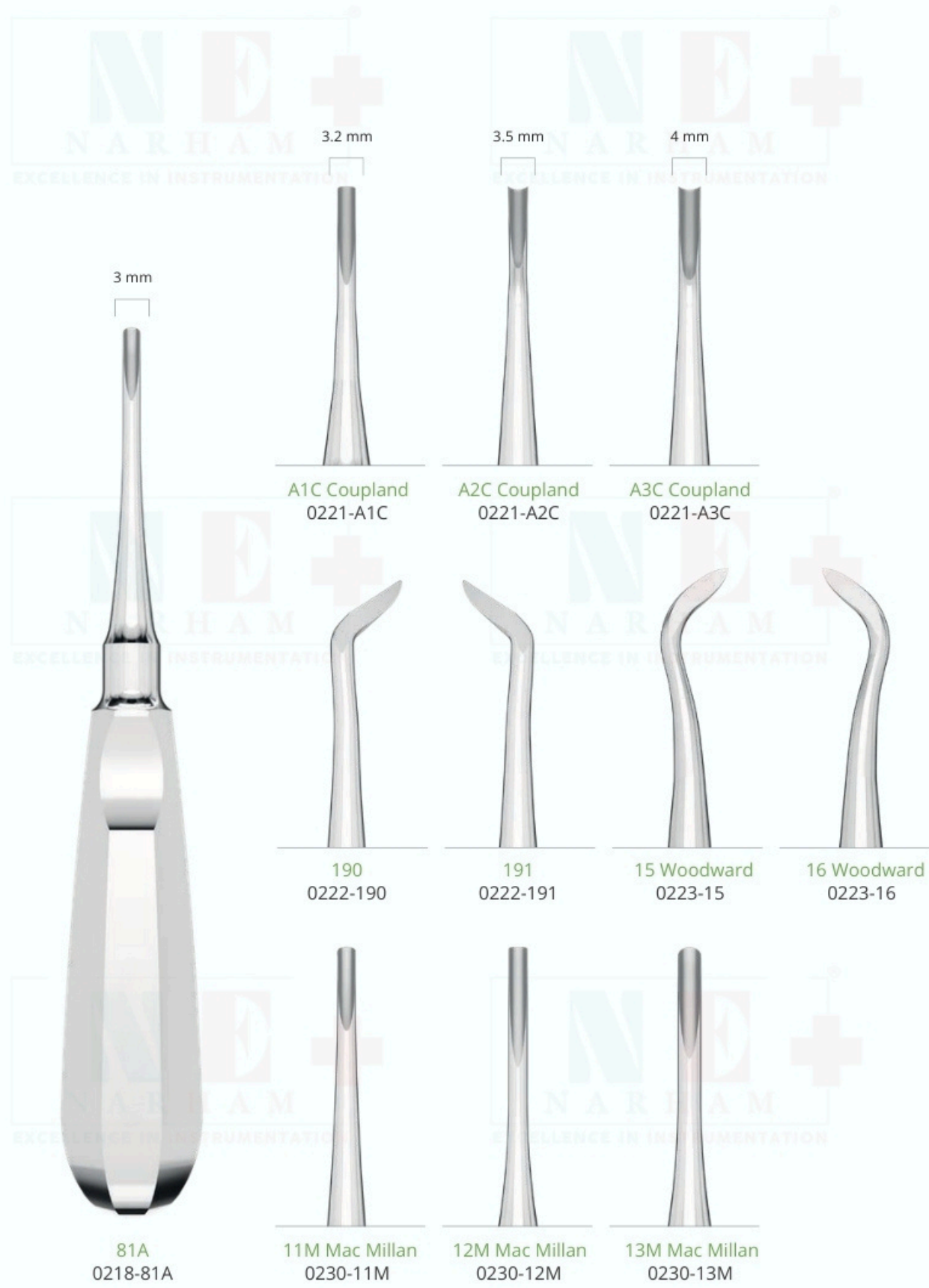


ROOT ELEVATORS WITH A STAINLESS STEEL HANDLE

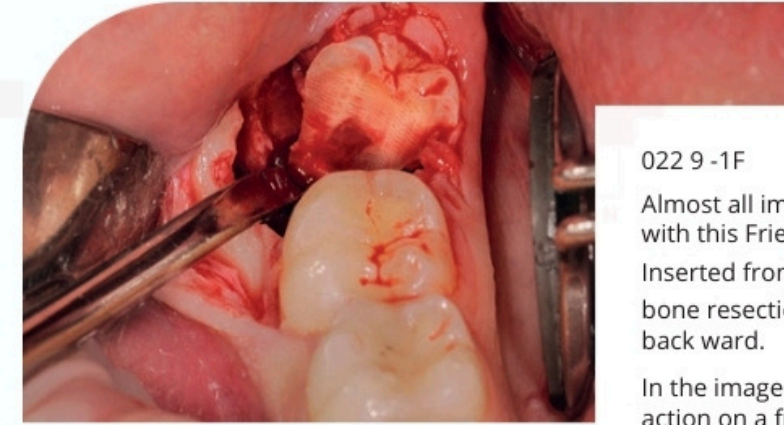
ROOT ELEVATORS WITH A STAINLESS STEEL HANDLE



ROOT ELEVATORS WITH A STAINLESS STEEL HANDLE



ROOT ELEVATORS WITH A STAINLESS STEEL HANDLE



022 9 -1F

Almost all impacted wisdom teeth can be handled with this Friedman elevator.

Inserted from above into the gap produced by bone resection, it dislocates the tooth upward and back ward.

In the image: Friedman elevator and mirror in action on a fragment of third molar (double mirror + Friedman elevator).



ROOT ELEVATORS WITH A STAINLESS STEEL HANDLE



ROOT ELEVATORS WITH A STAINLESS STEEL ERGONOMIC HANDLE



ROOT ELEVATORS WITH A STAINLESS STEEL ERGONOMIC HANDLE

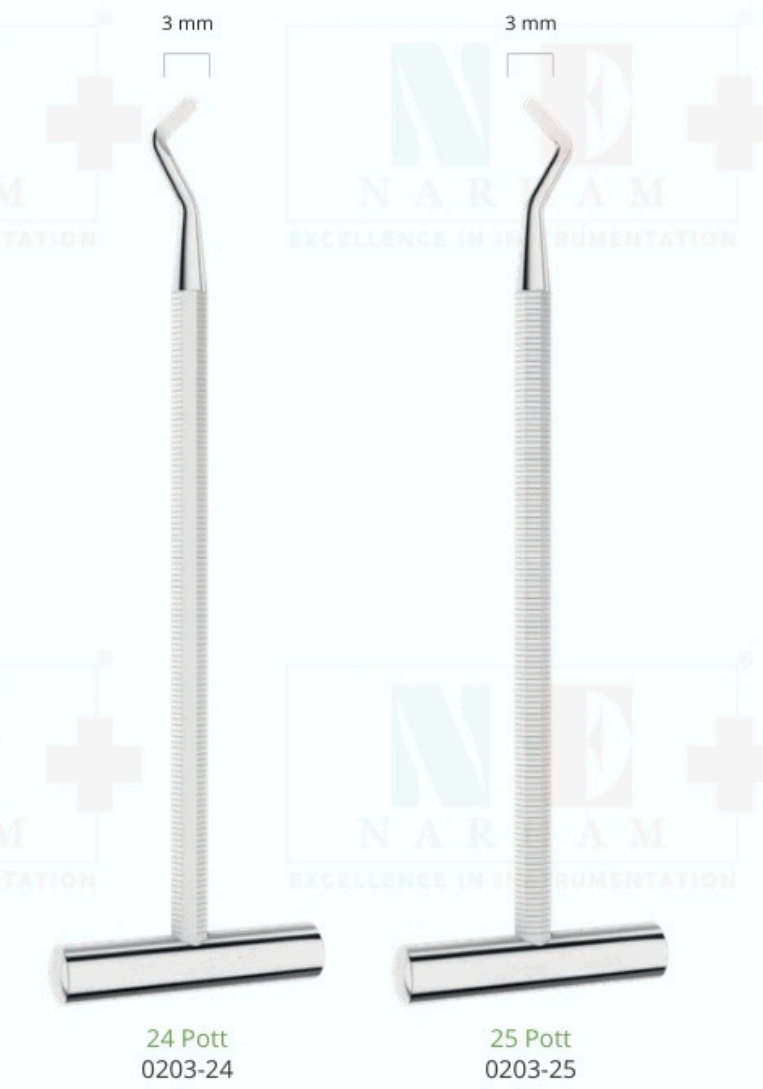
ROOT ELEVATORS WITH A STAINLESS STEEL HANDLE



ROOT ELEVATORS WITH A STAINLESS STEEL HANDLE



ROOT ELEVATORS WITH A STAINLESS STEEL HANDLE



ROOT-TIP PICKS WITH STAINLESS STEEL HANDLE



ROOT-TIP PICKS WITH STAINLESS STEEL HANDLE

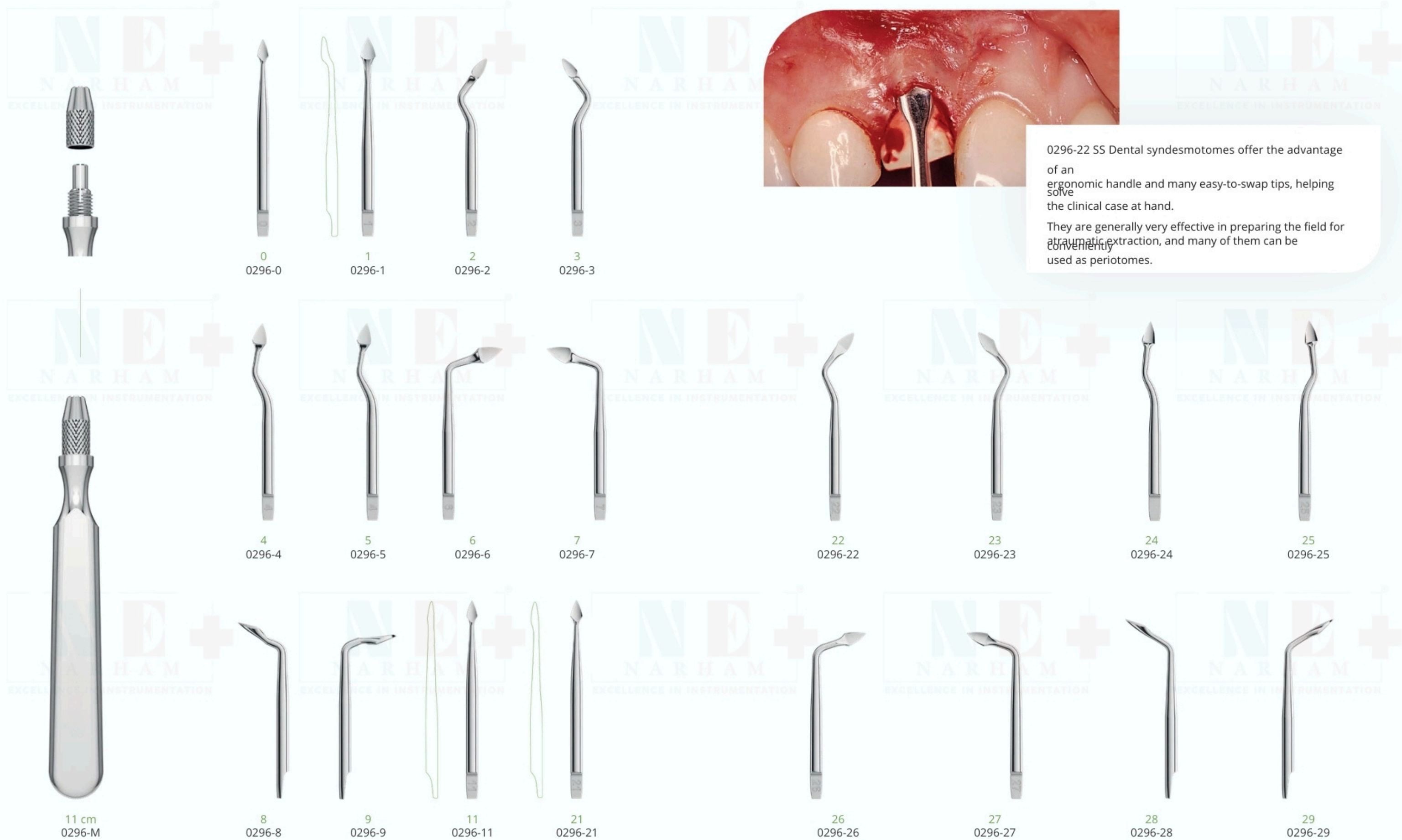


SYNDESMOTOMES WITH A STAINLESS STEEL HANDLE



SYNDESMOTOMES

SYNDESMOTOMES



0296-22 SS Dental syndesmotomes offer the advantage of an ergonomic handle and many easy-to-swap tips, helping solve the clinical case at hand. They are generally very effective in preparing the field for atraumatic extraction, and many of them can be used as periostomes.

EXCISER



PR1857-1  
Perfectio  
n

PERIOTOMES

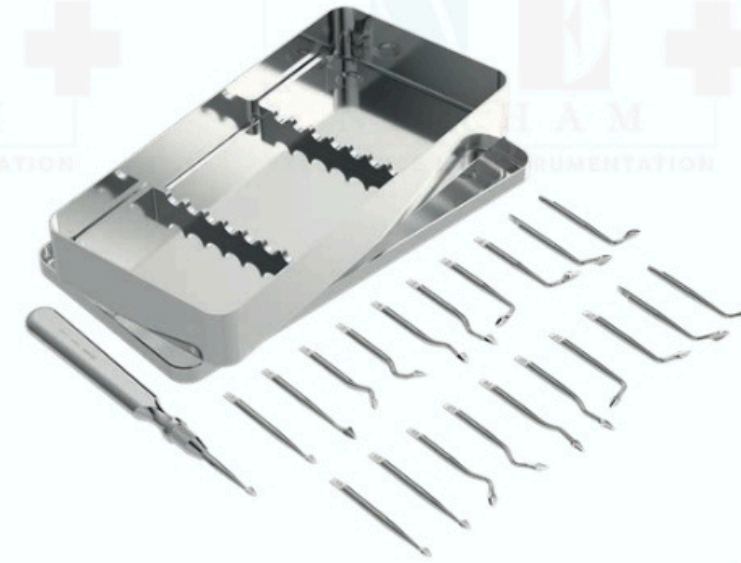


1  
ML1845-1

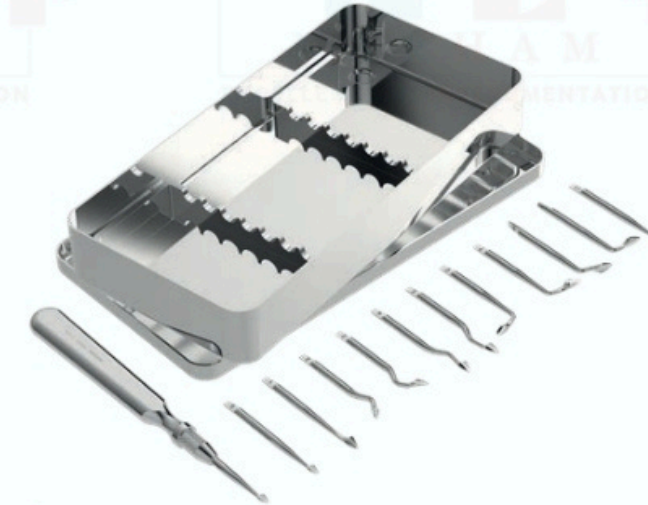
2  
ML1845-2

3  
ML1845-3

INSTRUMENT KIT FOR SYNDESMOTOMES



S0296



S0296-1



02 9 7-1  
Syndesmotome tips holder  
20 holes  
70x40x12 mm

0296-1	syndesmotome	handle	
0296-0	syndesmotome	tip	0
0296-1	syndesmotome	tip	1
0296-2	syndesmotome	tip	2
0296-3	syndesmotome	tip	3
0296-4	syndesmotome	tip	4
0296-5	syndesmotome	tip	5
0296-6	syndesmotome	tip	6
0296-7	syndesmotome	tip	7
0296-8	syndesmotome	tip	8
0296-9	syndesmotome	tip	9
0296-11	syndesmotome	tip	11
0296-21	syndesmotome	tip	0296-
0296-22	syndesmotome	tip	22
0296-23	syndesmotome	tip	23
0296-24	syndesmotome	tip	24
0296-25	syndesmotome	tip	25
0296-26	syndesmotome	tip	26
0296-27	syndesmotome	tip	27
0296-28	syndesmotome	tip	28
0296-29	syndesmotome	tip	29
S2700	instrument	tray	
	complete	with insert	
		frame	
0296-M	syndesmotome	handle	
0296-0	syndesmotome	tip	0
0296-1	syndesmotome	tip	1
0296-2	syndesmotome	tip	2
0296-3	syndesmotome	tip	3
0296-4	syndesmotome	tip	4
0296-5	syndesmotome	tip	5
0296-6	syndesmotome	tip	6
0296-7	syndesmotome	tip	7
0296-8	syndesmotome	tip	8
0296-9	syndesmotome	tip	9
0296-11	syndesmotome	tip	11
S2700	instrument	tray	

complete  
with insert  
frame



PR1857-1  
Used immediately following scalpel incision, it facilitates incision of the periosteal up to the exposure of bone tissue.



KIT FOR EXTRACTION AND ORAL SURGERY



Oral surgery kit  
SPR2781-S

ML2101	mouth mirror handle	
2230-5	double sided mouth	5
0702L-15	mirrors periodontal	CP-15
0350-5	pocket probes scalpel	5
PR1857-1	handle and blade exciser	
MV1851-PR3	Prichard periosteal tissue	PR3
PR0625-2	pliers Seldin retractor	
1855-23	Farabeuf retractor	23
2616-1	Friedman root elevator	
0229-2F	Friedman root elevator	
0229-1F	Mini Friedman root	
0291-1F	elevator Mini Friedman	
0291-2F	root elevator Lucas bone	
ML2001-85	curette Lucas bone	85
ML2001-87	curette Lucas bone	87
ML2001-88	curette periodontal	88
ML1806-2RL	instrument periodontal	2R/2L
ML1806-4RL	instrument Castroviejo	4R/4L
PR0460-15TC	needle holder gum	
0309-2TC	scissors instrument	
2780-1B	cassette	2TC

ACCESSORIES  
case for instruments and pliers



- 1 9002 case
- 2 9 0 02-2 insert with elastic bands for 10 instruments
- 3 9002-3 insert with slots for 16 instruments
- 4 9 0 02-1 insert for 6 extractive forceps

9002



S0100-3

0100-33	extracting forceps	33
0100-51A	extracting forceps	51A
51A	extracting forceps	67A
0100-67A	extracting forceps	79
67A	root elevator	1B
0100-79	root elevator	2F
020 0 -1	root elevator	3F
0201-2	root elevator	320
0201-3	root elevator	321
0202-320		
0202-321		



S0100-4

0100-33	extracting forceps	33
0100-51A	extracting forceps	51A
0100-67A	extracting forceps	67A
0100-79	extracting forceps	79
020 0 -1	root elevator	1B
0201-2	root elevator	2B
0201-3	root elevator	3B
0435-14TC	needle holders	
0425-16TC	needle holders	