

ORAL SURGERY

NARHAM
EXCELLENCE IN INSTRUMENTATION



SURGICAL PRECISION: NECESSARY AND INDISPENSABLE

As a dental professional, you know that the more invasive a procedure is, the clearer your communication with your patient must be. Your patient's safety, your reassurance and the management of the clinical case become as important as the procedure itself. Through the combination of your skills in the field and our precision instruments, you can ensure an optimal outcome in the shortest amount of time. That is precisely why we answer the call of professionals like you who seek ergonomic instruments that help reduce the complexity of the procedure and prevent complications.



HANDLE

DOUBLE-ENDED

SS60 (stainless steel) ø 6.0 mm

SS Light MV (stainless steel, hollow) ø 8.0 mm Leonardo ML (stainless steel) ø 7.0 mm



standard instrument



instrument with tungsten carbide (TC) inserts

HOW TO USE THE INFORMATION

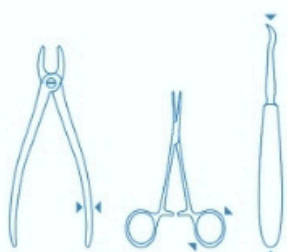
- 1 Hemingway → model + scientific name
- ML2000-1 → SS Dental code handle
- Leonardo ML → option

SSLady

products ergonomically designed for women's hands:

- smaller and lighter handles
- smaller finger holes
- reduced size

code starts with "W" or "SW"



these products are not manufactured by SS Dental and are distributed with the manufacturer's brand



top view



side view

GUM SCISSORS



1 straight 12 cm 0300-1



2 curved 12 cm 0300-2



1 straight 12 cm W0319-1



2 curved 12 cm W0319-2



1 angular 11.5 cm 0301-1



1 angular one serrated blade 11.5 cm 0301-2



1 Goldman-Fox straight one serrated blade 13 cm 0304-1



2 Goldman-Fox curved one serrated blade 13 cm 0304-2

GUM SCISSORS

GUM SCISSORS



GUM SCISSORS



1 Sullivan straight
one serrated blade
14.5 cm
0311-1



2 Sullivan curved
one serrated blade
14.5 cm
0311-2



1TC Locklin angular
16.5 cm
0310-1TC



1 Locklin angular
one serrated blade
16.5 cm
0310-1



2 Locklin angular
one serrated blade
16.5 cm
0310-2



2TC Locklin angular
16.5 cm
0310-2TC

GUM SCISSORS



1 Neumann curved
12.5 cm
0 3 02-1



1 Dean curved
one serrated blade
17 cm
0306-1



1 La Grange curved
one serrated blade
12 cm
0 3 07-1



1 Noyes (Castroviejo) curved
very thin beaks
12 cm
0303-1



1 Westcott curved
sharp beaks
11 cm
0312-1

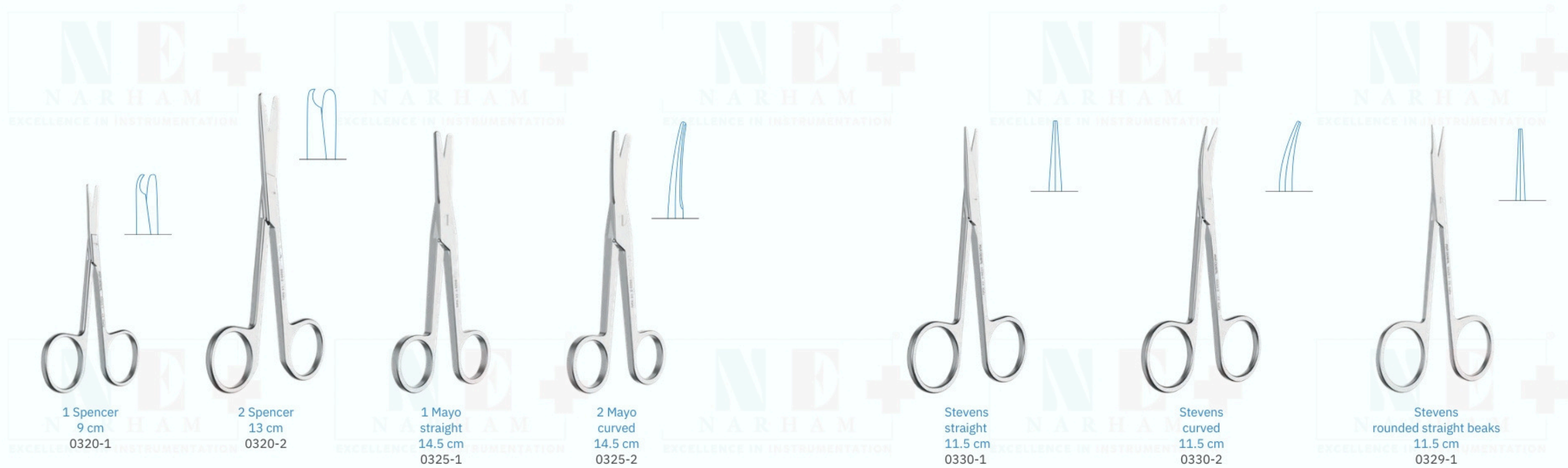


2 Westcott curved
blunt beaks
11 cm
0312-2



1 curved
very thin beaks
14.5 cm
0313-1

GUM SCISSORS
suture scissors



GUMSCISSORS
suture scissors

dissecting scissors



NEEDLE HOLDERS



Olsen-Hegar
scissors combined
14 cm
0400-14



TC Olsen-Hegar
14 cm
0405-14TC



Baumgartner
14.5 cm
0404-14



TC Hegar-Baumgartner
14 cm
0409-14TC



Crile-Wood
15 cm
W 0 411 -15

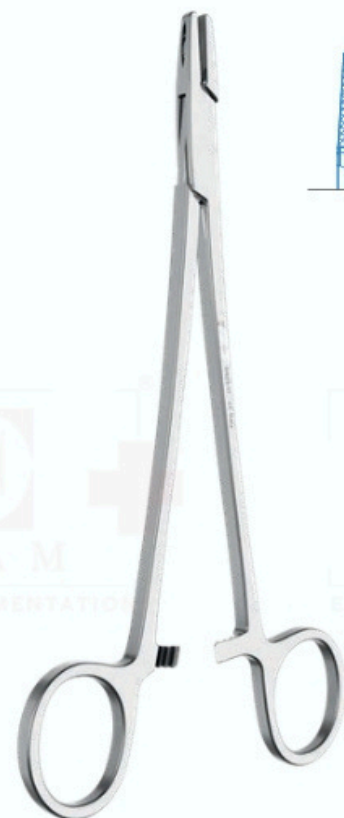
SSLady



Crile-Wood
15 cm
0410-15



TC Crile-Wood
15 cm
0415-15TC



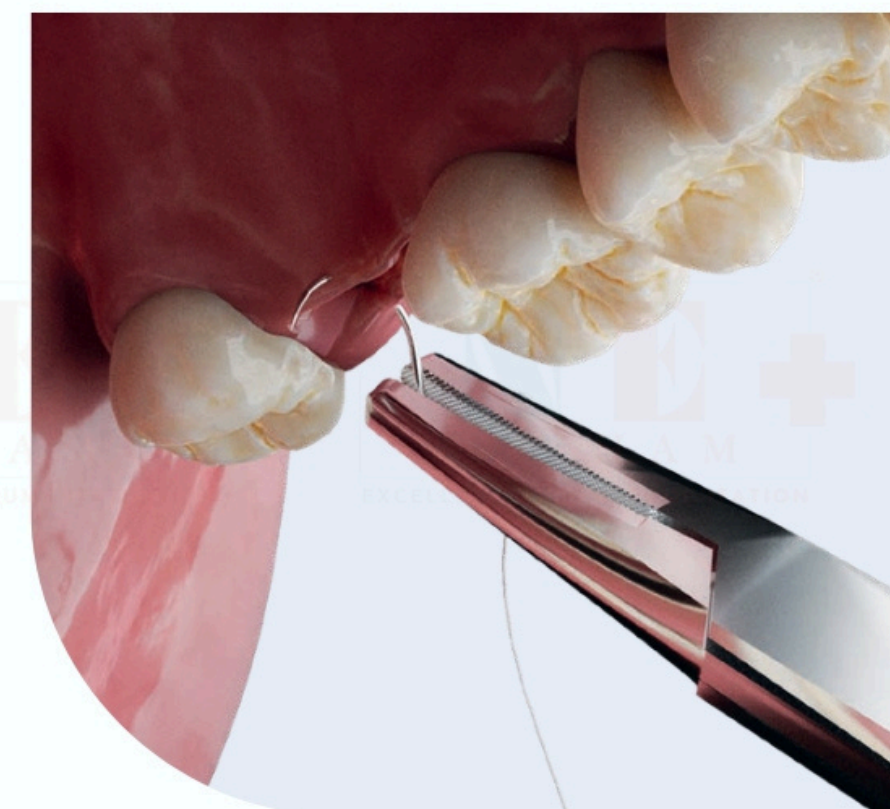
Adson
17.5 cm
0403-17



TC Crile-Wood
15 cm
W0411-15TC

SSLady

0409-14TC



NEEDLE HOLDERS



Mayo-Hegar
16 cm
0420-16



TC Mayo-Hegar
16 cm
0425-16TC



Mayo-Hegar
16 cm
W 0 412-1 6

SSLady

NEEDLE HOLDERS



Derf
12 cm
0 4 01 -12



TC Derf
12 cm
0406-12TC



TC Halsey-Smooth
smooth jaws
13 cm
0407-13TC



Mayo-Hegar
18 cm
0420-18



TC Mayo-Hegar
18 cm
0425-18TC



TC Mayo-Hegar
16 cm
W0412-16TC

SSLady



TC Mini-Ryder
18 cm
0416-18TC



TC Mini-Ryder
15 cm
0416-15TC



TC Halsey
13 cm
0408-13TC

NEEDLE HOLDERS



Gillies
scissors combined
16 cm
0414-16



TC Gillies
scissors combined
16 cm
0419-16TC



TC Fine Swedish
15 cm
0417-15TC

NEEDLE HOLDERS



Lichtenberg
smooth action
17 cm
0432-17



TC Lichtenberg
17 cm
0437-17TC



Eiselberg-Mathieu
19,5 cm
0422-19



Toennis
light pattern
18 cm
0421-18



TC Toennis
light pattern
18 cm
0426-18TC



TC Micro-Vascular
15 cm
0418-15TC



Arruga
16 cm
0433-16



TC Arruga
16 cm
0438-16TC

NEEDLE HOLDERS

NEEDLE HOLDERS



Mathieu
14 cm
0430-14



Mathieu
14 cm
0431-14



Mathieu
scissors combined
14 cm
0432-14



TC Mathieu
14 cm
0435-14TC



TC Mathieu
14 cm
0436-14TC



TC Micro-Barraquer
with curved jaws
18 cm
0451TH-18TC



Mathieu
17 cm
0430-17



Mathieu
17 cm
0431-17



TC Mathieu
14 cm
0432-14TC



TC Mathieu
17 cm
0435-17TC

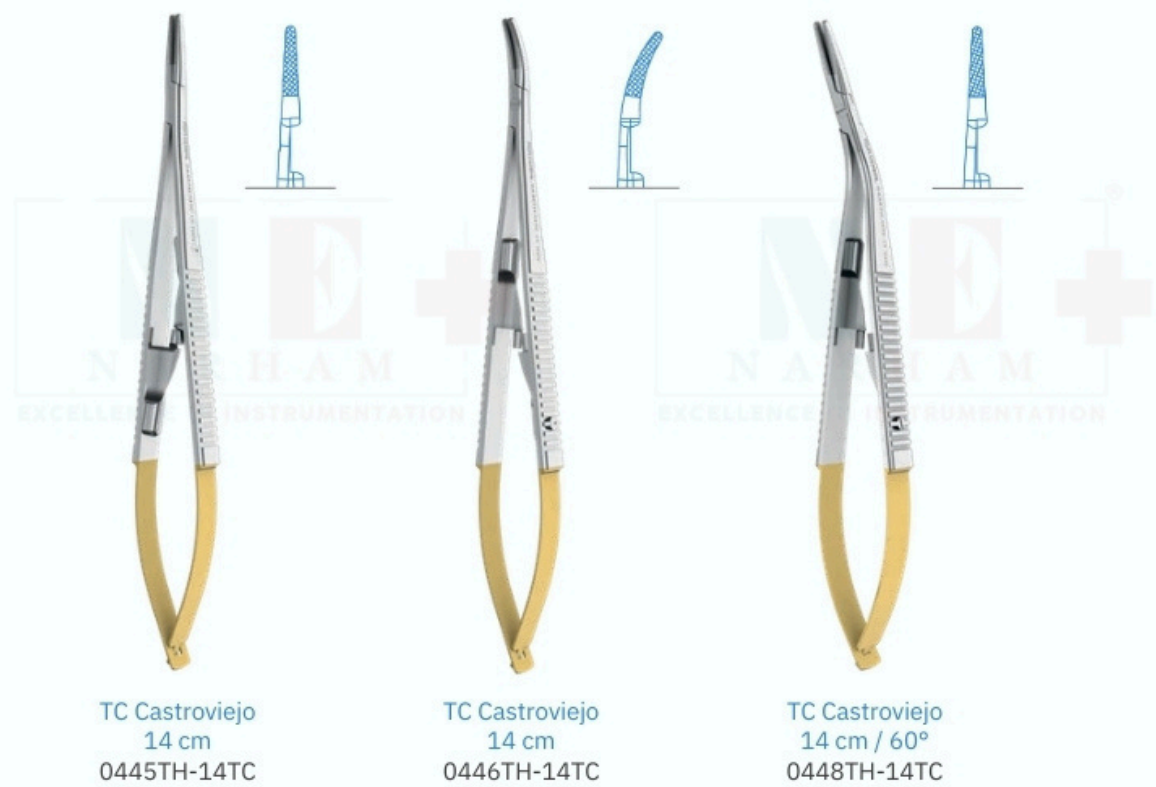


TC Mathieu
17 cm
0436-17TC

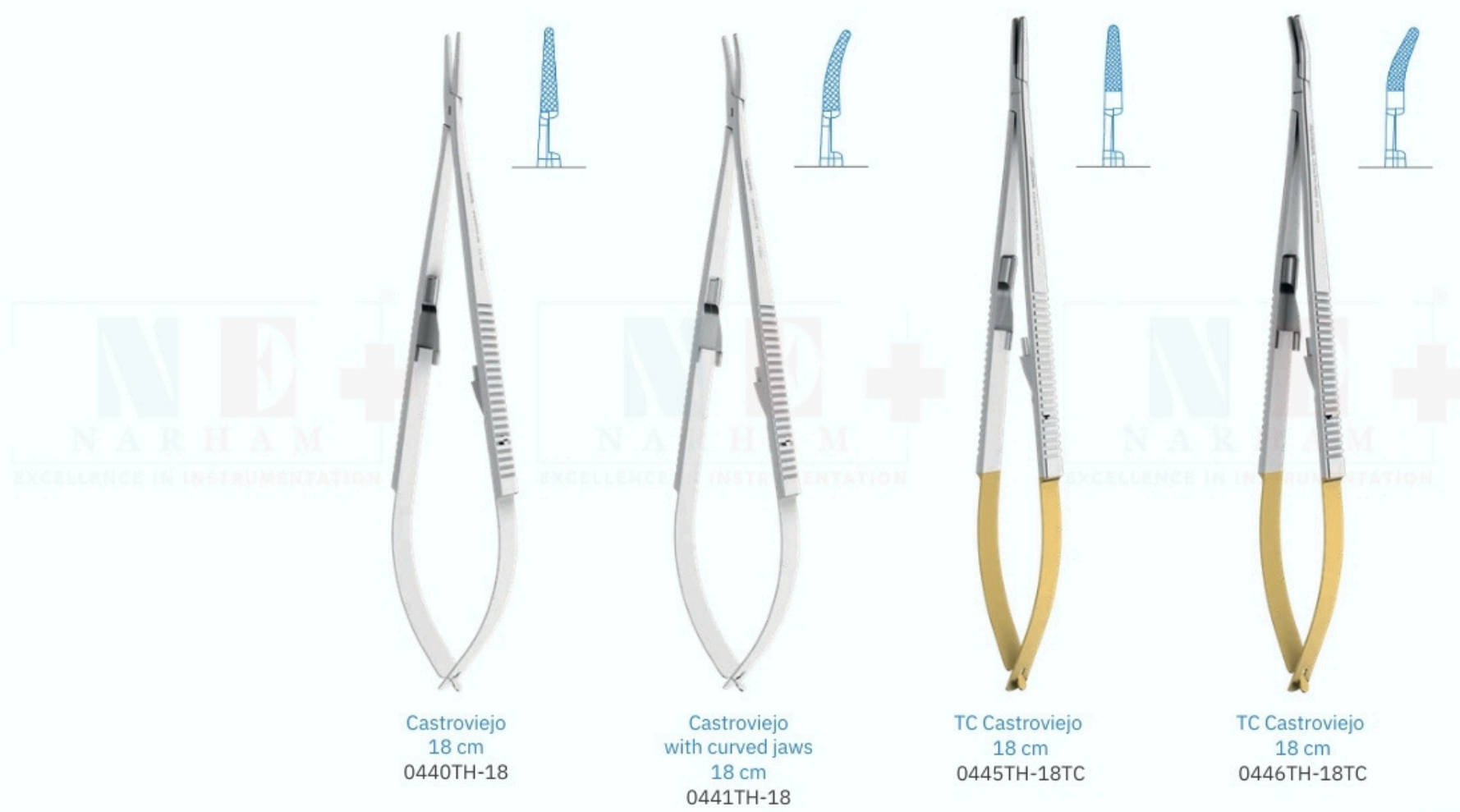
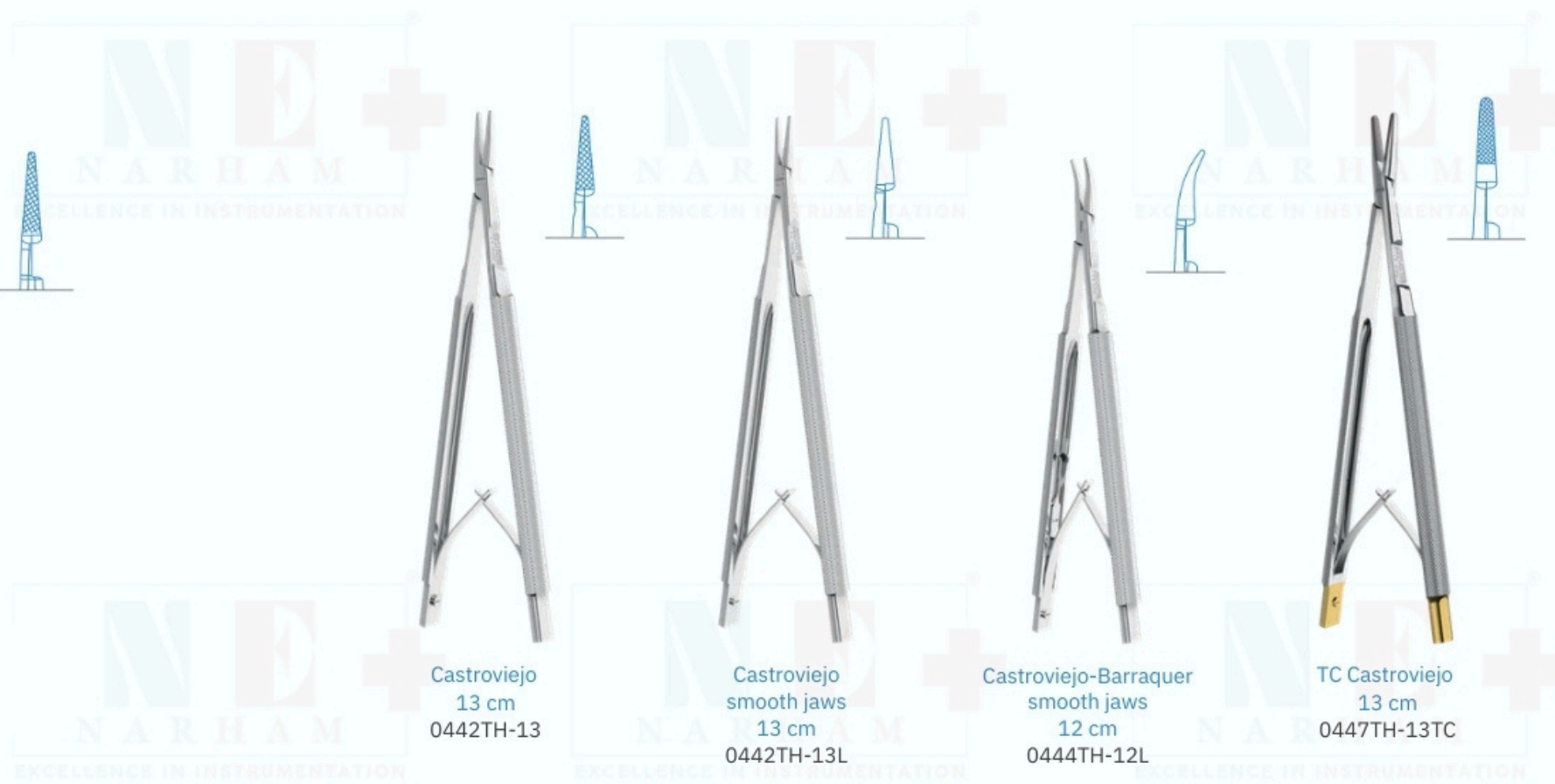


TC Micro-Barraquer
18 cm
0450TH-18TC

NEEDLE HOLDERS



NEEDLE HOLDERS



HEMOSTATS



1 Crile
straight
14 cm
0520-1



2 Crile
curved
14 cm
0520-2



1 Kocher 1x2
straight
14 cm
0530-1



1 Halstead-Mosquito
straight
12 cm
0500-1



1 Halstead-Mosquito
straight
12 cm
W 0 5 02-1



2 Halstead-Mosquito
curved
12 cm
0500-2



2 Kocher 1x2
curved
14 cm
0530-2



1 Pean
straight
14 cm
0540-1



2 Pean
curved
14 cm
0540-2



2 Halstead-Mosquito
curved
12 cm
W 0 5 02-2



1 Halstead-Mosquito 1x2
straight
12 cm
0505-1

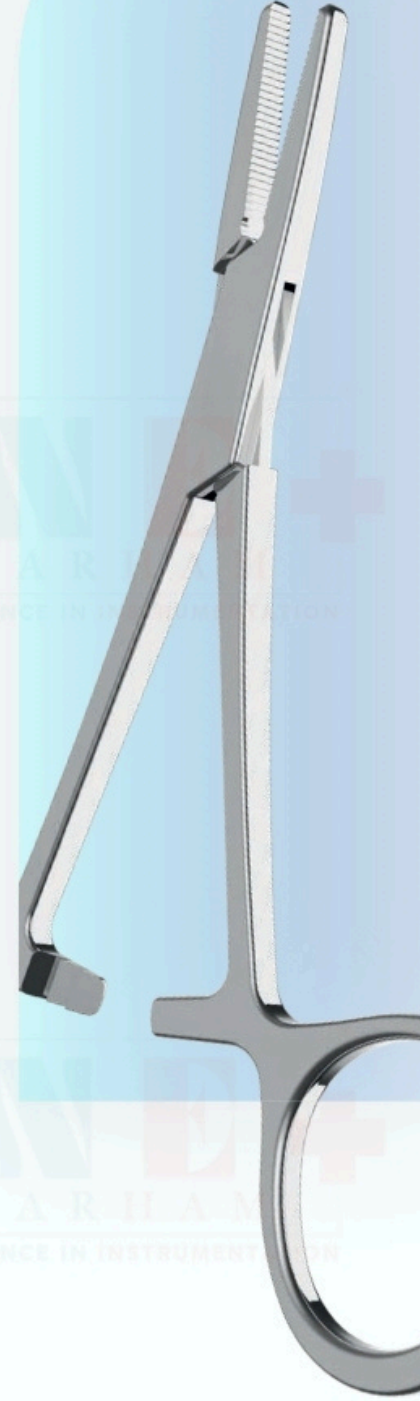


2 Halstead-Mosquito 1x2
curved
12 cm
0505-2

HEMOSTATS

HEMOSTATS

HEMOSTATS



1 Micro-Mosquito
straight
10 cm
0501-1



2 Micro-Mosquito
curved
10 cm
0501-2



1 Kelly
straight
14 cm
0510-1



2 Kelly
curved
14 cm
0510-2



1 Micro-Mosquito 1x2
straight
10 cm
0506-1



2 Micro-Mosquito 1x2
curved
10 cm
0506-2



1 Hartmann
straight
10 cm
0515-1



2 Hartmann
curved
10 cm
0515-2



ORIENTABLE
BLADE SCALPEL
HANDLES

BLADE REMOVER

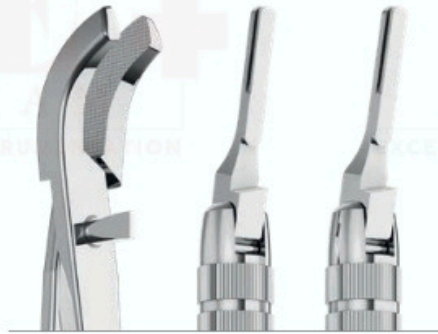
DISPOSABLE SCALPELS ①
10 pcs / box



16 cm
0335-1
(pair of instruments)



16.5 cm
0352



S0352
kit of
0352
blade remover +
0335-1
(pair of instruments)
orientable blade scalpel handles



0371-10



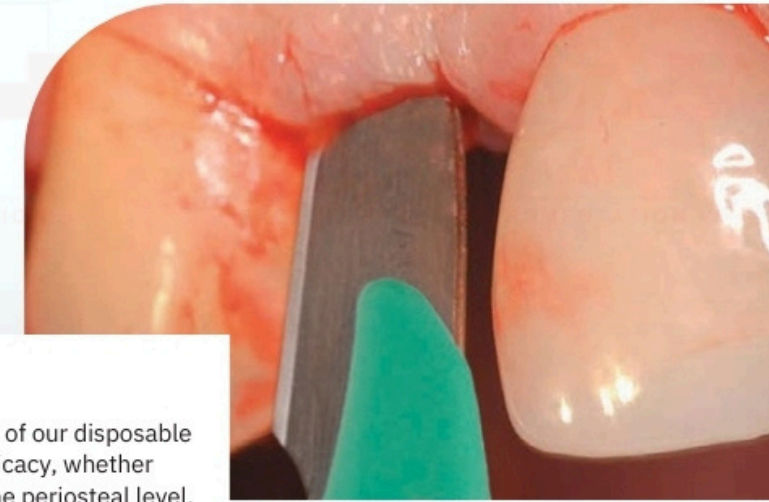
0371-11



0371-12



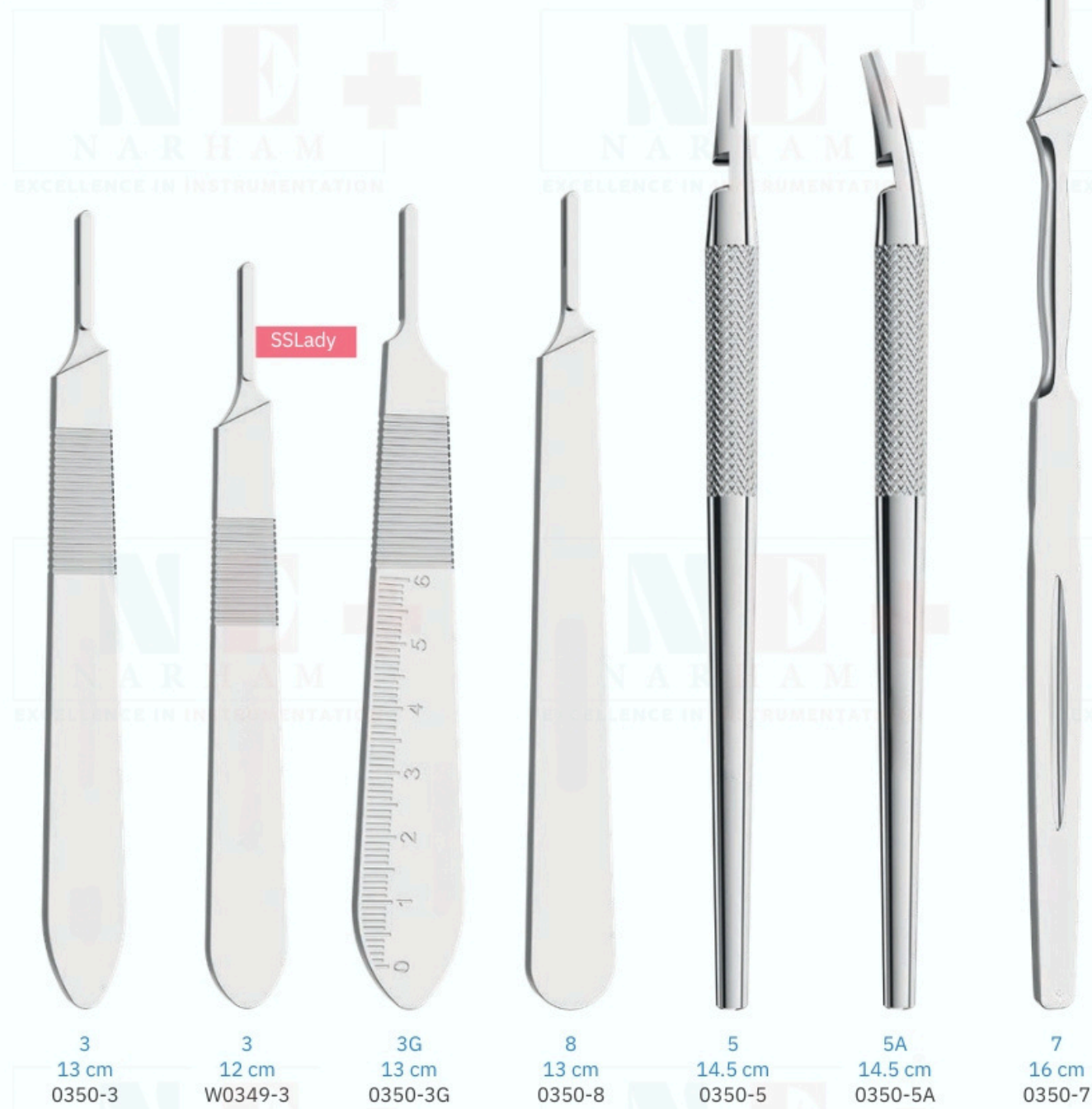
0371-15



037 1-10

Sharp and thin, the blades of our disposable scalpels maintain their efficacy, whether used superficially or at the periosteal level.

SCALPEL HANDLES

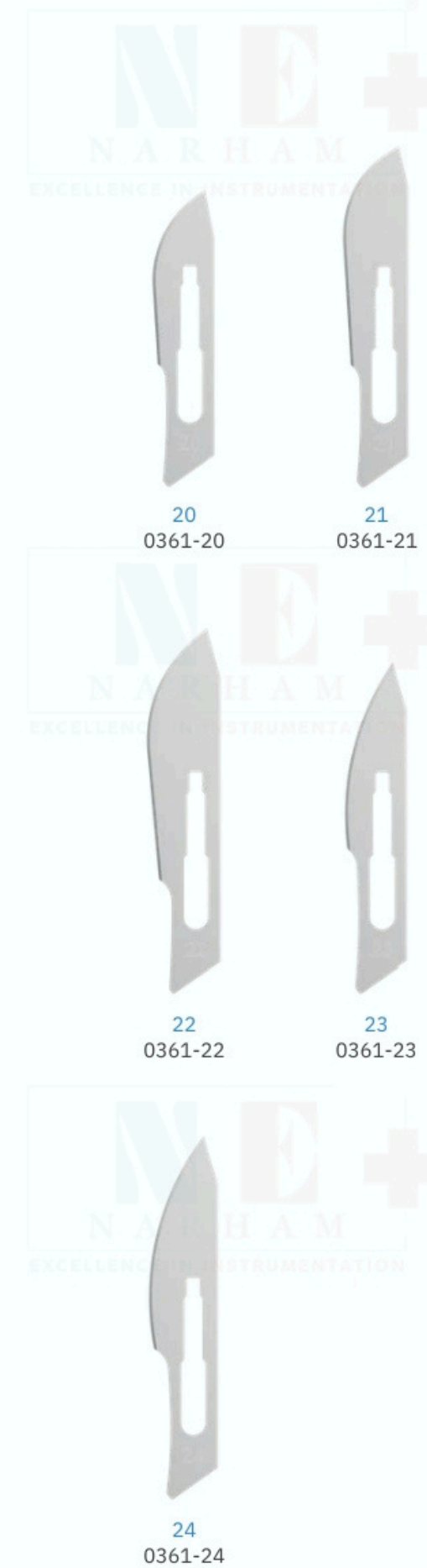


SSLady

SCALPEL HANDLES



SCALPEL BLADES 100 pcs (sterile) / box



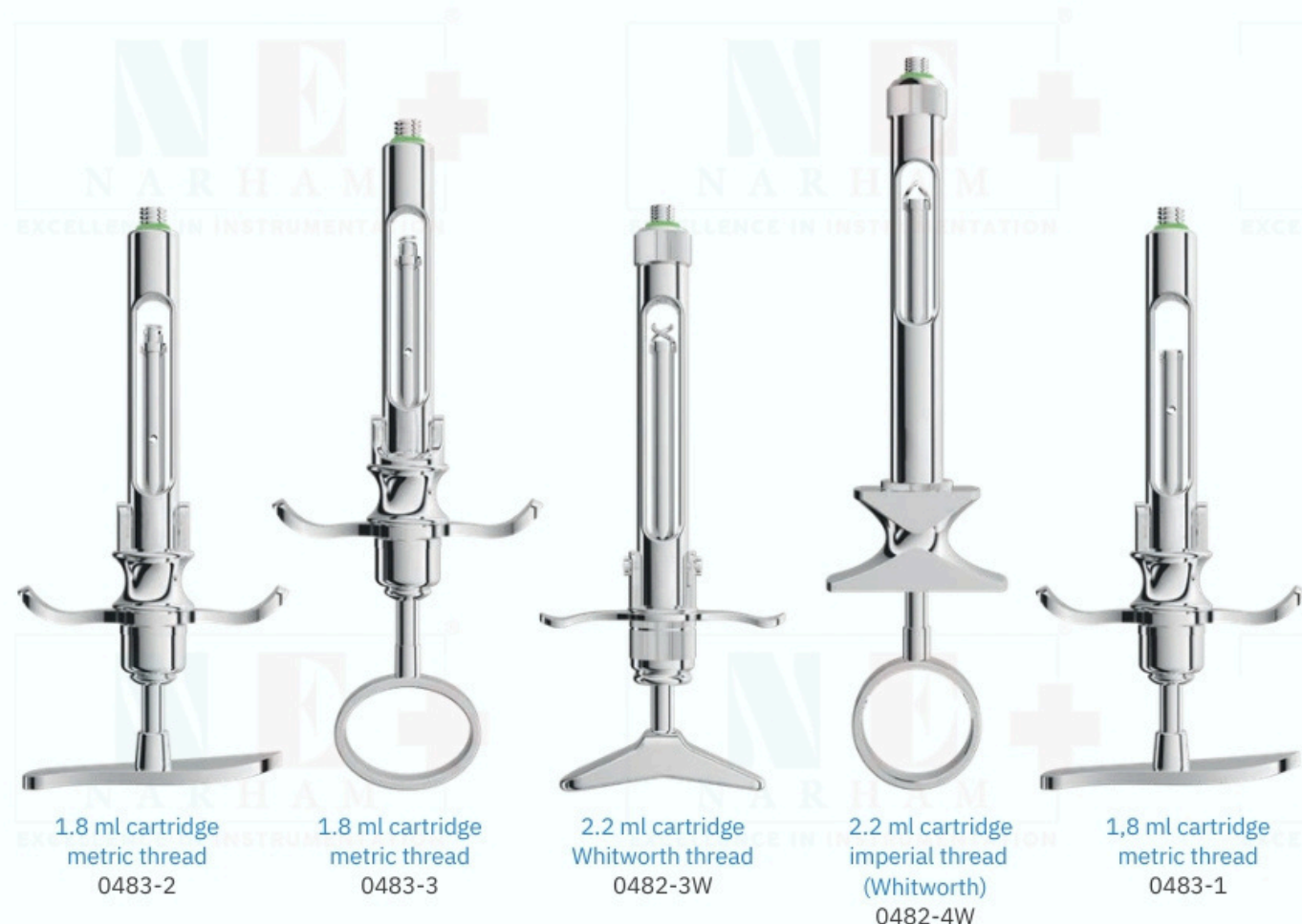
MICRO-BLADES 25 pcs (sterile) / box



SCALPEL BLADES 100 pcs (sterile) / box



DENTAL SYRINGES
manual aspiration



DENTAL SYRINGES
cork screw tip



Spare caps for

- 0480-1
- 0480-2
- 0480-3
- 0480-4

self-aspirating



DENTAL SYRINGES

intraalveolar anesthesia

Stainless steel syringe

1.8 ml cartridge
metric thread
0481-8

Brass syringes
with stainless steel
moving parts

2.2 ml cartridge
Whitworth thread
0482-7 W

1.8 ml cartridge
metric thread
0481-7

Autoclavable plastic protection sleeve

Syringe stand



0481-T1



0482-1

TOWEL CLAMPS



1 Backhaus
8 cm
0550-1



2 Backhaus
11 cm
0550-2



3 Backhaus
13 cm
0550-3

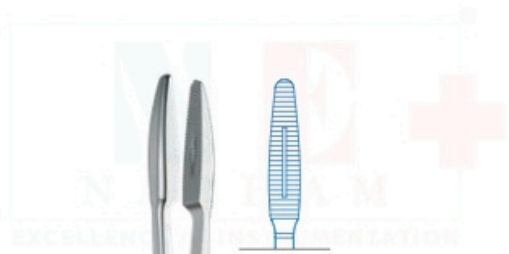


Schaedle
9 cm
0680

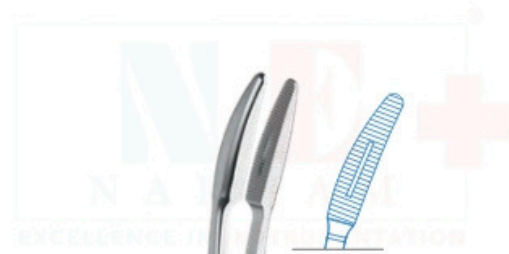


Jones
9 cm
0681

DRESSING FORCEPS



Gross -Maier
straight
20 cm
0555-1



Gross -Maier
curved
20 cm
0555-2



Gross -Maier
straight
25 cm
0557-1



Gross -Maier
curved
25 cm
0557-2

MOUTH GAGS

For adults



Molt
14 cm
1870-2

For children



Molt
11 cm
1870-1



Roser-Koenig
19 cm
1871-2



Roser-Koenig
16 cm
1871-1

TONGUE HOLDING FORCEPS



Collin
16
cm
0560



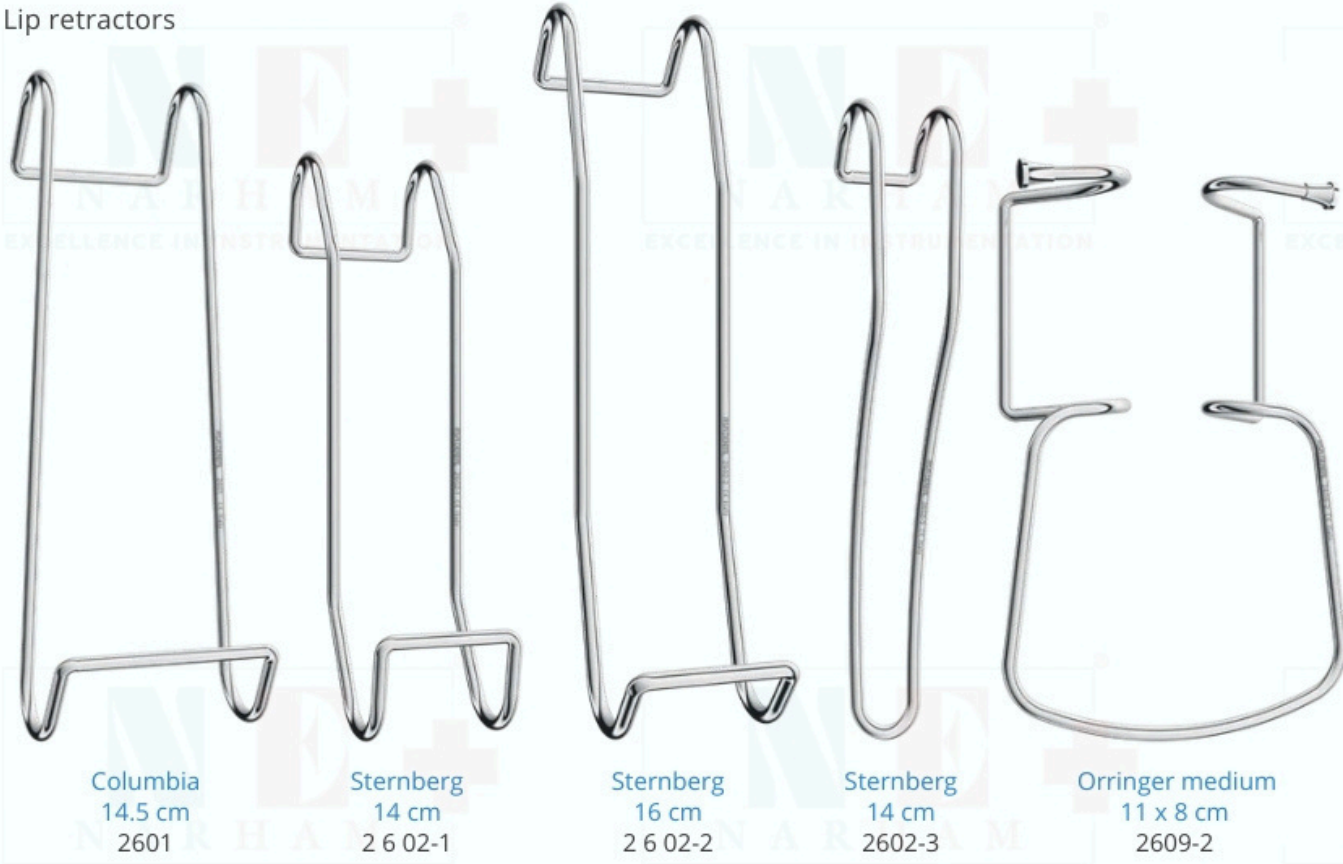
0561-R



Young
17 cm
0561

RETRACTORS

Lip retractors



Tongue depressors



Cheek retractor

RETRACTORS



RETRACTORS

NSSI spine ramus retractors

RETRACTORS

LACRIMAL PROBES

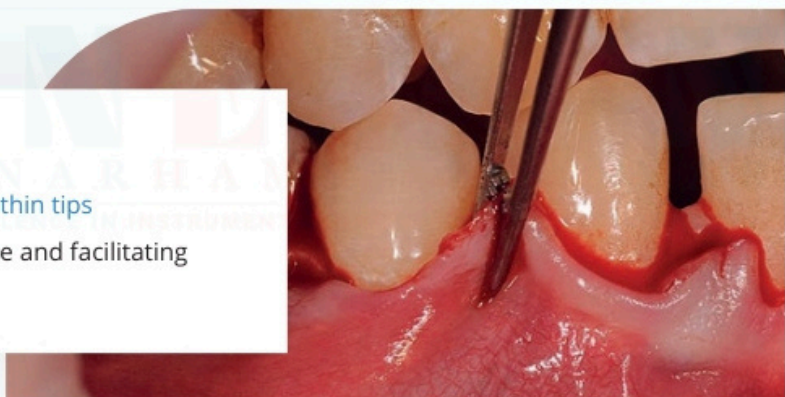


TISSUE PLIERS

PR0632-1

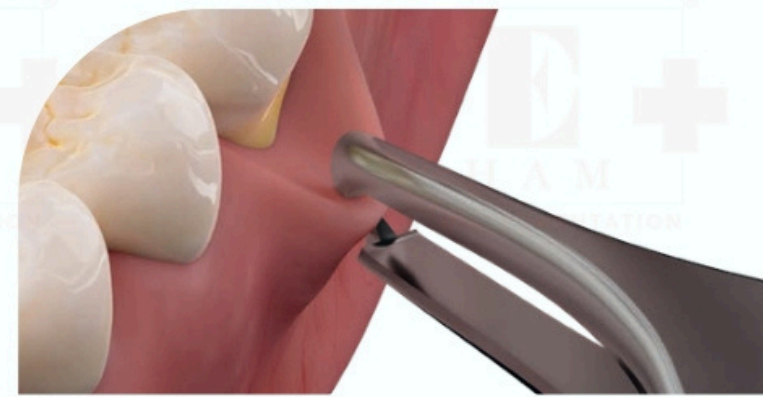
Atraumatic tissue pliers with thin tips

Ideal pliers for handling tissue and facilitating suturing procedures.



0,8 mm

TISSUE PLIERS



0622-2



Cooley
17.5 cm
PR0632-1



1
Adson
12 cm
0620-1



1
Adson 1x2
12 cm
0621-1



1
Micro-Adson 1x2
12 cm
0622-1



2
Micro-Adson 1x2
15 cm
0622-2



10 cm
0623-1

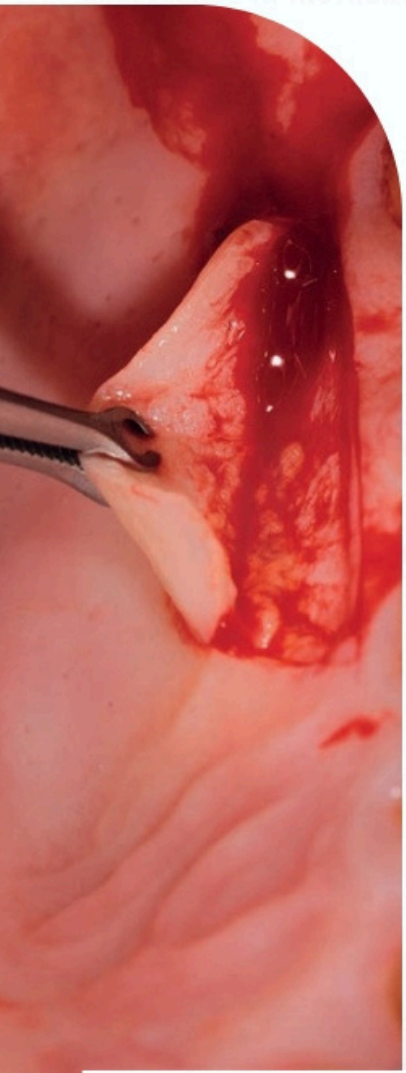


Micro-Adson
12 cm
0624-1



Micro-Adson
15 cm
0624-2

TISSUE PLIERS
suture pliers



PR0625-3
Allows atraumatic manipulation of the soft tissue and facilitates suturing.

TISSUE PLIERS

0.16 mm

0.13 mm

16 cm
PR0625-2

17 cm
PR0625-3

1
15 cm
0625-1

Adson Brown
atraumatic
12 cm
0626-1

1
Semken-Taylor
12.5 cm
0630-1

2
Semken-Taylor
12.5 cm
0630-2

1
Semken-Taylor 1x2
12.5 cm
0631-1

2
Semken-Taylor 1x2
12.5 cm
0631-2

Diagram of a serrated jaw tip.

Diagram of a curved jaw tip.

Diagram of a curved jaw tip with a different curvature.

TISSUE PLIERS

very thin tips

Set of 5



1 · 2 · 3 · 4 · 5
S0645

TISSUE PLIERS



1
12.5 cm
0645-1

2
12 cm
0645-2

3
11.5 cm
0645-3

4
11.5 cm
0645-4

5
11.5 cm
0645-5

1
13 cm
0635-1

2
14 cm
0635-2

3
15 cm
0635-3

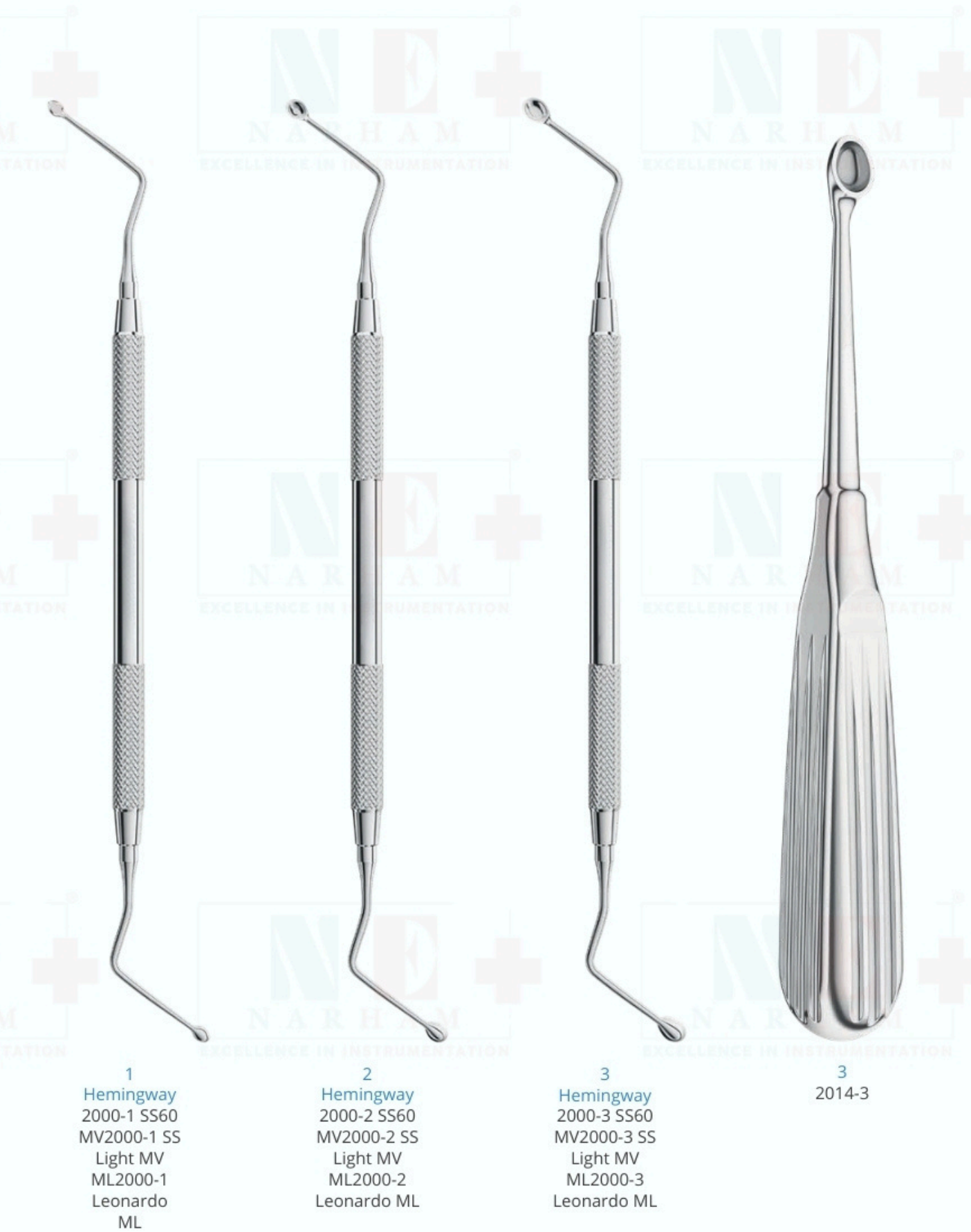
4
18 cm
0635-4

5
20.5 cm
0635-5

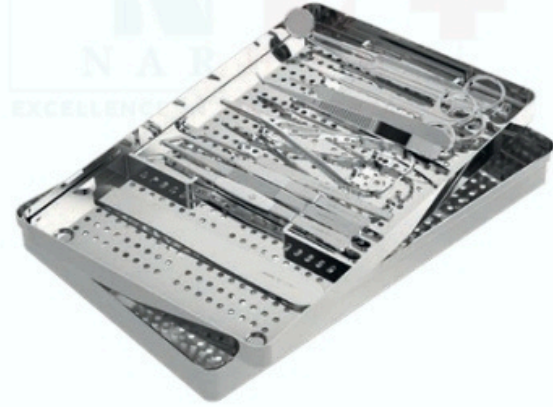
SURGICAL STAINLESS STEEL SALIVA EJECTORS



BONE CURETTES



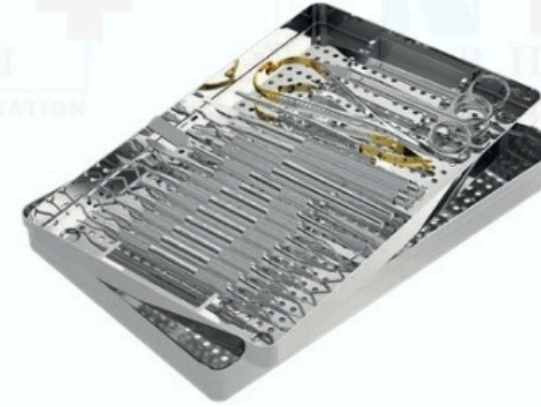
INSTRUMENT KIT FOR ORAL SURGERY



S3002-13

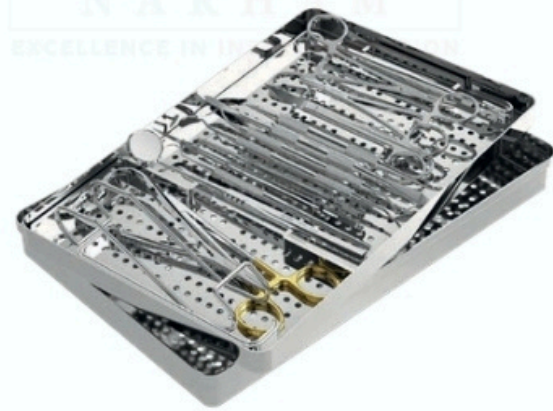
0602-2	cotton and dressing pliers	2
0635-3	tissue pliers	3
0625-1	suture pliers	1
2611-2	retractor	
0430-14	Mathieu needle holder	
0441TH-14	Castroviejo needle holder	
0350-3	scalpel handle	
0320-2	straight Spencer surgical scissors	
0321-2	curved Metzenbaum surgical scissors	2
2102-IN	mouth mirror handle	
2607	Buchwald retractor	
2200-4	plane mouth mirror	4
S2722-1	perforated instrument tray complete with insert frame	

INSTRUMENT KIT FOR ORAL SURGERY



S3002-18

MV1807-08	Gracey curette	Gracey curette	7/8
MV1807-12	Gracey curette straight	Goldman-	11/12
MV1807-14	Fox scissors curved	Goldman-Fox	13/14
0304-1	scissors Lucas	bone curette Lucas	1
0304-2	bone curette	Kirkland knives	2
MV2001-85	Orban knives	Molt periosteal	85
MV2001-86	elevator	Prichard periosteal	86
MV1803-D	elevator straight	scalpel handle	1/2
MV1804-D	curved scalpel handle	Ochsenbein	1/2
MV1850-M9	chisel	Ochsenbein chisel	M9
MV1851-PR3	Castroviejo needle holder	Mathieu	PR3
0350-5	needle holder	perforated	5
0350-5A	instrument tray complete with		5A
1800-1	insert frame		1
1800-2			2
0445TH-14TC			
0435-14TC			
S2722-2			



S3002-17

2102-IN	mouth mirror handle	
0700-23	explorer with an anatomic handle	23
0601-2	London-College cotton and dressing pliers	2
0631-1	Semken-Taylor tissue pliers	1
1815-7	Goldman-Fox knives	7
1804-D	Orban knives	1/2
MV1850-M9	Molt periosteal elevator	M9
MV1851-PR3	Prichard periosteal elevator	PR3
2616-1	Farabeuf retractor	
2602-1	Sternberg retractor	
2613-2	Senn-Miller retractor	
0415-15TC	Crile-Wood needle holder	
0430-14	Mathieu needle holder	
0304-2	curved Goldman-Fox scissors	2
0500-1	straight Halstead-Mosquito hemostats	1
0500-2	curved Halstead-Mosquito hemostats	2
2200-5	plane mouth mirror	5
S2722-1	perforated instrument tray complete with insert frame	