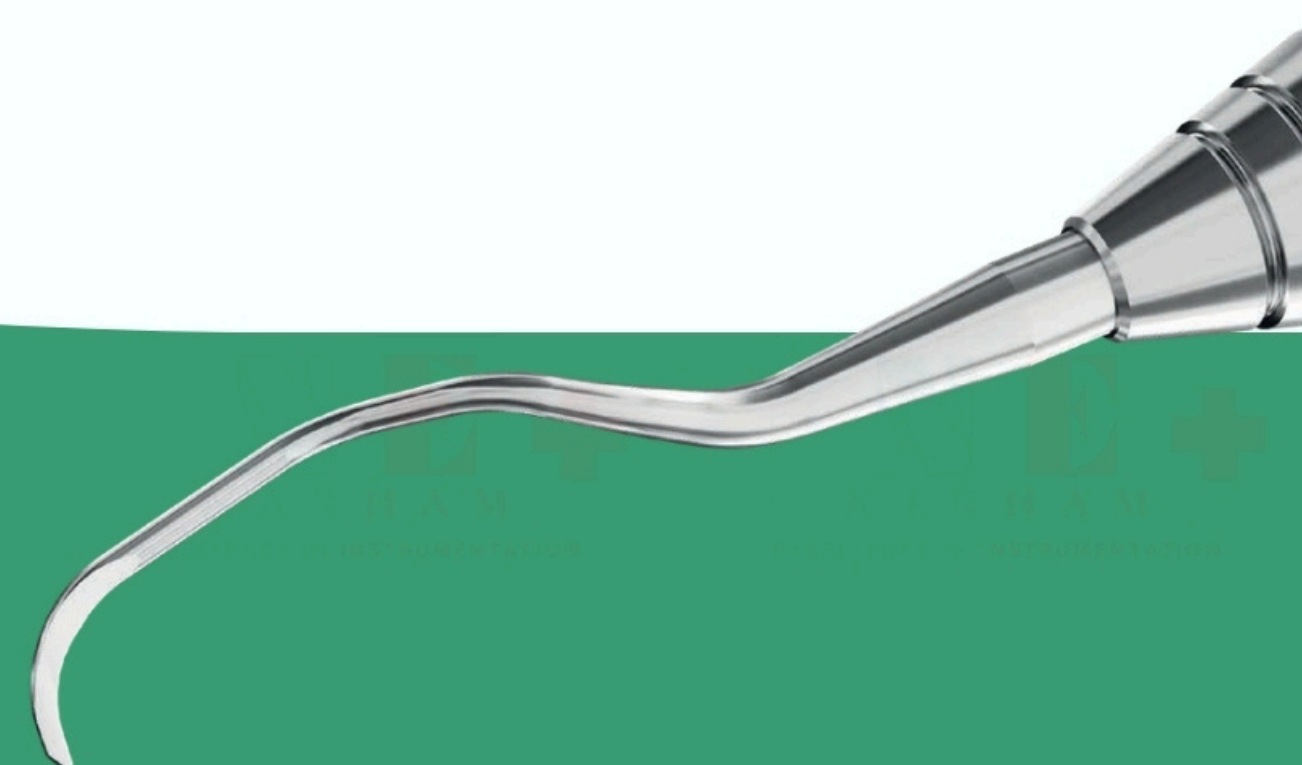
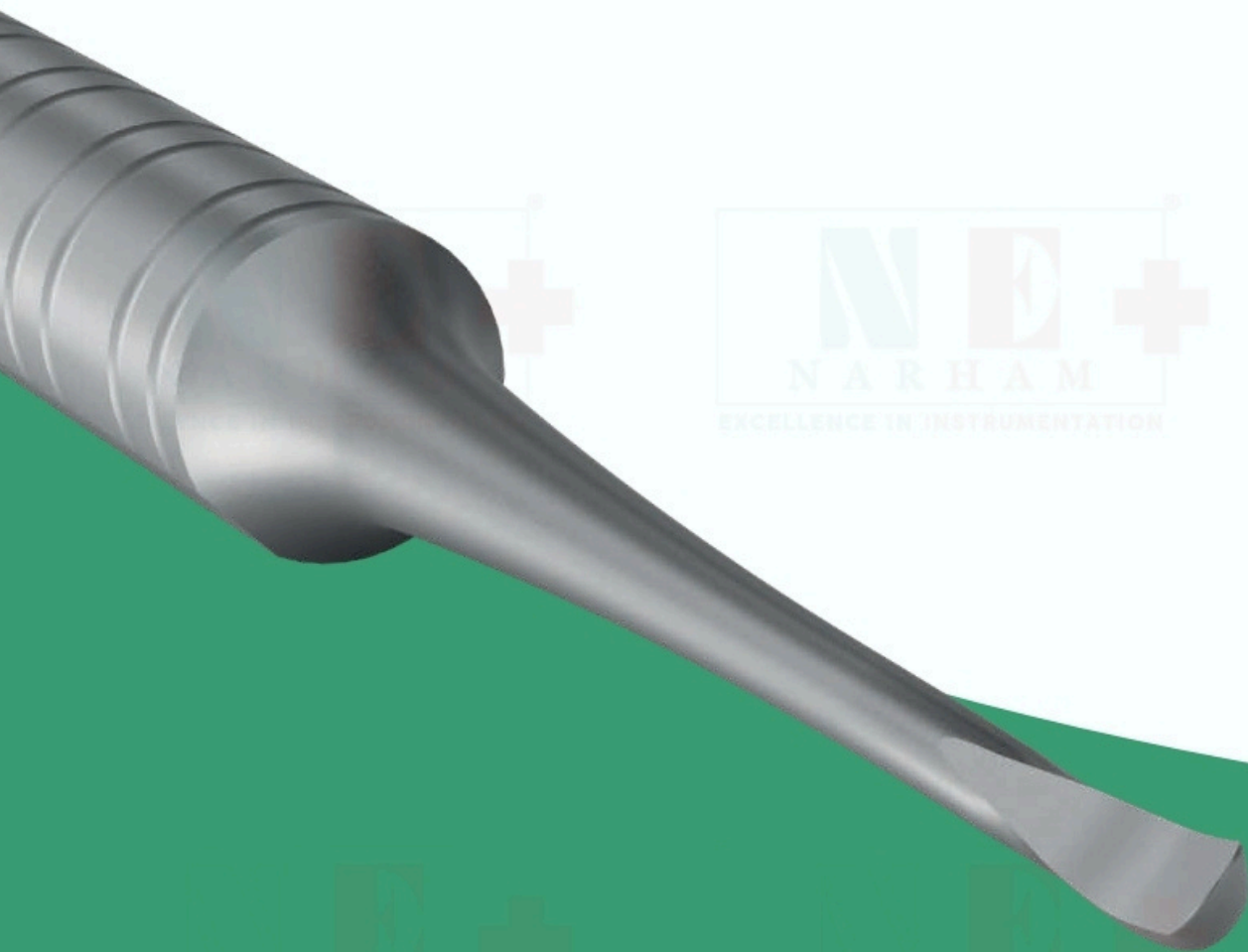


PERIODONTAL

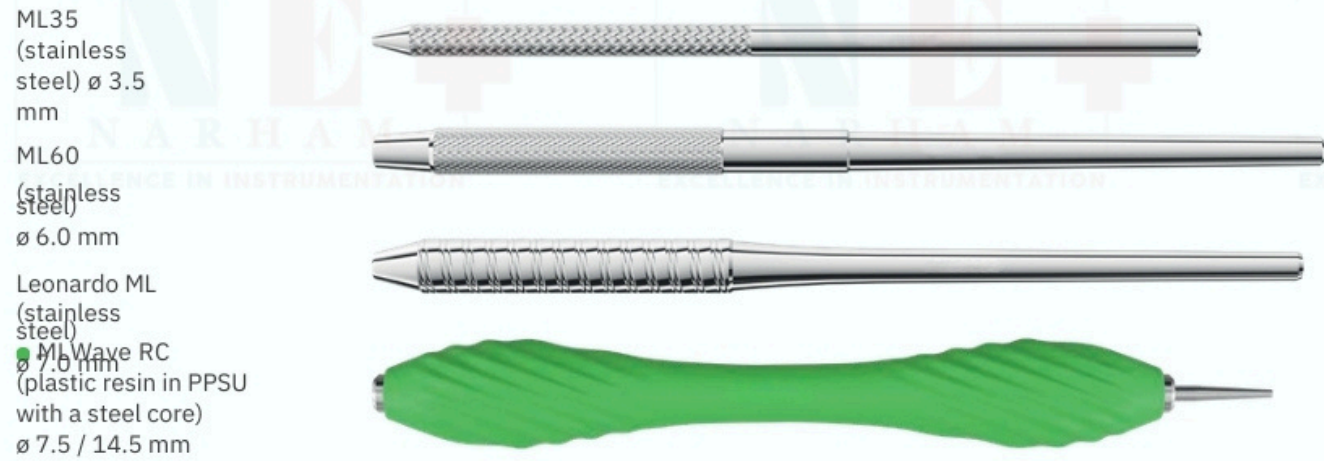


OPTIMIZING TIME, ENHANCING CUSTOMER SATISFACTION

At ML Dental we know that there are two things every professional cares the most about: customer satisfaction and time. Hence, manufacturing instruments that guarantee the best results in the shortest amount of time has become our number one motivator. We use cutting-edge technologies to create cutting-edge periodontal instruments, and we explore every possible design to give them the necessary options in terms of shape, handle and size. Sharp, durable and resilient to resist time and use.

HANDLE

SINGLE-ENDED



DOUBLE-ENDED



HOW TO USE THE INFORMATION

- CP-12 RC0702-12 — model + scientific
- MLWave RC — name ML Dental code
- handle option

EX ML WAVE: THE NEW ML DENTAL HANDLE

Maximum ergonomics, absolute control. The new ML Dental resin handle is designed to deliver an uncompromising experience. Made from PPSU (Polyphenylsulfone), a high-performance material, it offers exceptional resistance to sterilization and chemicals, maintaining its integrity over time.

Inspired by natural forms, its advanced parametric pattern ensures an optimal grip and precise movements while reducing hand fatigue. A perfect balance of safety and comfort, making it a reliable choice for every procedure.

PERIODONTAL POCKET PROBES



Quick and easy to clean, these periodontal explorers guarantee maximum precision. Depth markings stand up to the most extreme conditions. The ergonomic handle is designed to transform the instrument in the natural extension of your hand.

- New production process
- Laser marking system
- No more peeling paint
- Permanent marking
- Antiglare, low-depth marking
- Tips remain robust and intact



CURETTES AND SCALERS

Set of 7



Model 02 · 2RL · 4RL · 14 · 412
· 414 · Z 02 · 2RL · 4RL · 14 ·
412 · 414 · Z

Set Code
S1806
SMV1806

Handle
ML60 ML
Light MV

| | | | | | | |
|---|---|---|--|--|---|--|
|  <p>HU 1/2 1806-02 ML60 MV1806-02 ML Light MV</p> |  <p>2R/2L Columbia 1806-2RL ML60 MV1806-2RL ML Light MV ML1806-2RL Leonardo ML</p> |  <p>4R/4L Columbia 1806-4RL ML60 MV1806-4RL ML Light MV ML1806-4RL Leonardo ML</p> |  <p>13/14 Columbia 1806-14 ML60 MV1806-14 ML Light MV ML1806-14 Leonardo ML RC1806-14/ RC1806-14SF</p> <p>● MLWave RC</p> |  <p>Zerfing-Chisel 1820-Z ML60</p> |  <p>411/412 Columbia 1806- 412 ML60 MV1806-412 ML Light MV</p> |  <p>413/414 Columbia 1806-414 ML60 MV1806-414 ML Light MV</p> |
|---|---|---|--|--|---|--|

CURETTES AND SCALERS

| | | | | | |
|---|--|---|---|---|---|
|  <p>HU 1/2 Langer 1805-02 ML60 MV1805-02 ML Light MV</p> |  <p>5/6 Barnhart 1821-06 ML60</p> |  <p>13/14 Indiana University anterior 1824-14 ML60 MV1824-14 ML Light MV</p> |  <p>17/ 18 Indiana University posterior 1824-18 ML60 MV1824-18 ML Light MV</p> |  <p>ME-1 (10/11) 1822-ME1 ML60</p> |  <p>3/4 Rule (23/24) 1823-R04 ML60</p> |
|  <p>3/4 Langer 1805-04 ML60 MV1805-04 ML Light MV</p> | |  <p>1.5 mm 1 De Marco 1808-1 ML60</p> |  <p>2.2 mm 2 De Marco 1808-2 ML60</p> |  <p>1/2 Barnhart 1821-02 ML60</p> | |

CURETTES AND SCALERS

Set of 7



Model 1 · 2 · 3 · 4 ·
5 · 6 · 21 1 · 2 · 3 ·
4 · 5 · 6 · 21

Set Code Handle
S1809 ML60
SMV1809 ML Light MV

CURETTES AND SCALERS

| | | | |
|--|--|--|--|
| | | | |
| <p>1 Goldman-Fox 1809-1 ML60 MV1809-1 ML Light MV ML1809-1 Leonardo ML</p> | <p>2 Goldman-Fox 1809-2 ML60 MV1809-2 ML Light MV ML1809-2 Leonardo ML</p> | <p>3 Goldman-Fox 1809-3 ML60 MV1809-3 ML Light MV ML1809-3 Leonardo ML</p> | <p>4 Goldman-Fox 1809-4 ML60 MV1809-4 ML Light MV ML1809-4 Leonardo ML</p> |
| | | | |
| <p>5 Goldman-Fox 1809-5 ML60 MV1809-5 ML Light MV ML1809-5 Leonardo ML</p> | <p>6 Goldman-Fox 1809-6 ML60 MV1809-6 ML Light MV</p> | <p>21 Goldman-Fox 1809-21 ML60 MV1809-21 ML Light MV ML1809-21 Leonardo ML</p> | <p>21 Goldman-Fox 1809-21 ML60 MV1809-21 ML Light MV ML1809-21 Leonardo ML</p> |

| | | | |
|--|---|--|--|
| | | | |
| <p>11/12 Mc Call 1825-12 ML60 MV1825-12 ML Light MV</p> | <p>11A/12A Mc Call 1825-12A ML60</p> | <p>13/14 Mc Call 1825-14 ML60 MV1825-14 ML Light MV RC1825-14/ RC1825-14SF ● MLWave RC</p> | <p>13/14 Mc Call 1825-14 ML60 MV1825-14 ML Light MV RC1825-14/ RC1825-14SF ● MLWave RC</p> |
| | | | |
| <p>13S/14S Mc Call 1825-14S ML60 MV1825-14S ML Light MV ML1825-14S Leonardo ML</p> | <p>17S/18S Mc Call 1825-18S ML60 MV1825-18S ML Light MV</p> | <p>RC1825-14S/ RC1825-14SSF ● MLWave RC</p> | <p>19/20 Mc Call 1825-20 ML60 MV1825-20 ML Light MV</p> |

CURETTES AND SCALERS



6S Mini Crane-Kaplan
RC1829-CK6SSF
● MLWave RC
1829-CK6S
ML60
ML1829-CK6S
Leonardo ML
RC1829-CK6S
● MLWave RC



204
1827-204
ML60



6 Crane-Kaplan
1829-CK6 ML60
MV1829-CK6 ML
Light MV
ML1829-CK6
Leonardo ML
LV1829-CK6
Leonardo Light LV

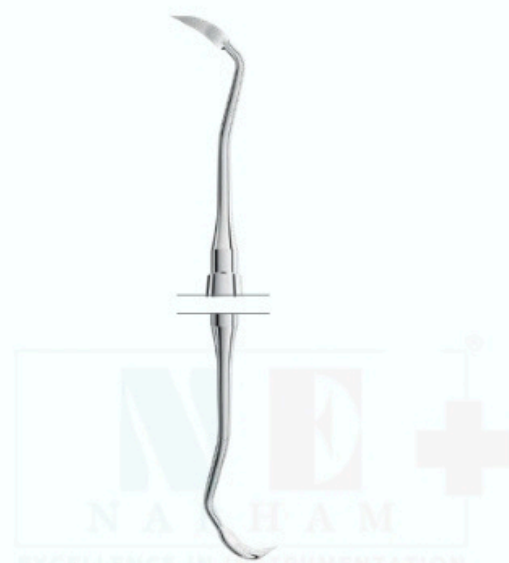
RC1829-CK6/
RC1829-CK6SF
● MLWave RC



204S 1827-204S
ML60 MV1827-
204S ML Light MV
ML1827-204S
Leonardo ML
LV1827-204S
Leonardo Light LV



RC1827-204S/
RC1827-204SSF
● MLWave RC



2/3 Taylor 1826-
T03 ML60
MV1826-T03 ML
Light MV
ML1826-T03
Leonardo ML
LV1826-T03
Leonardo Light LV



7/8 Younger-Good
1830-YG08 ML60
MV1830-YG08 ML
Light MV ML1830-
YG08 Leonardo ML

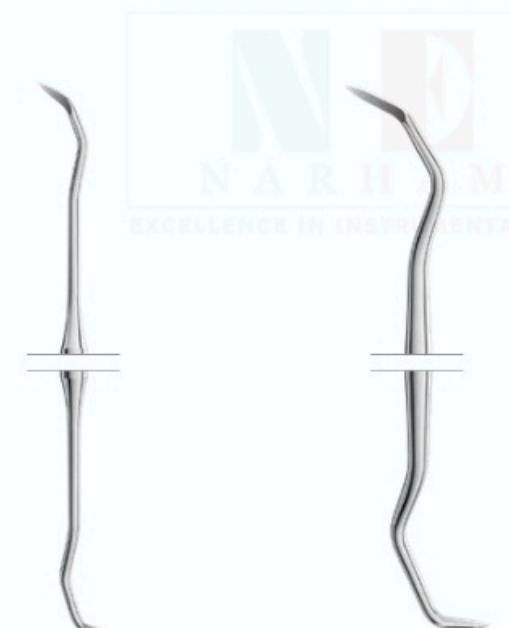


31/32 Jacquette
1831-32
ML60
MV1831-32
ML Light MV

CURETTES AND SCALERS



30/33 Jacquette
1831-33
ML60
MV1831-33
ML Light MV



34/35 Jacquette
1831-35
ML60
MV1831-35
ML Light MV



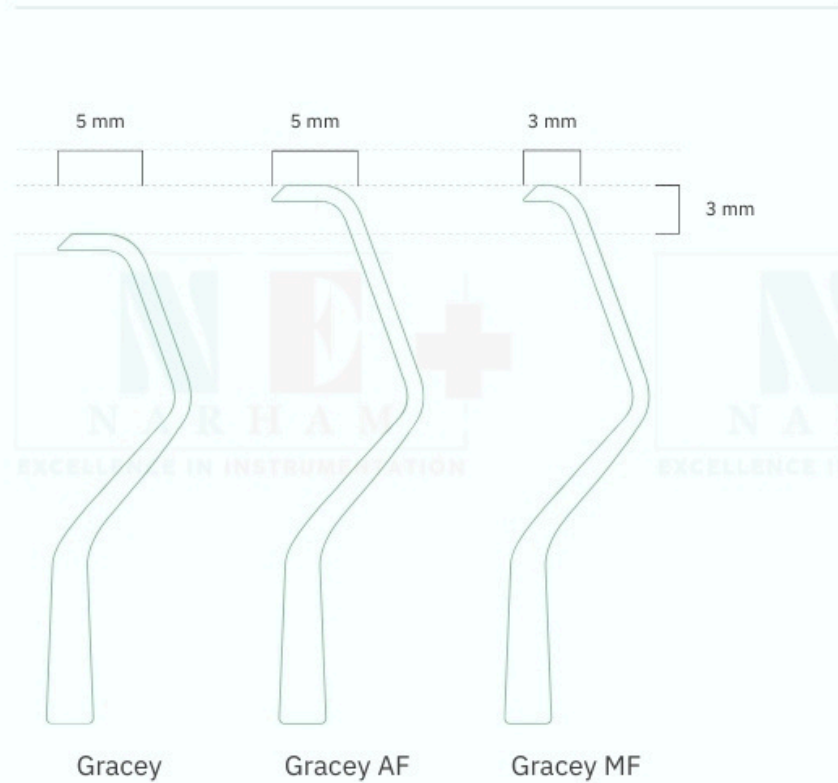
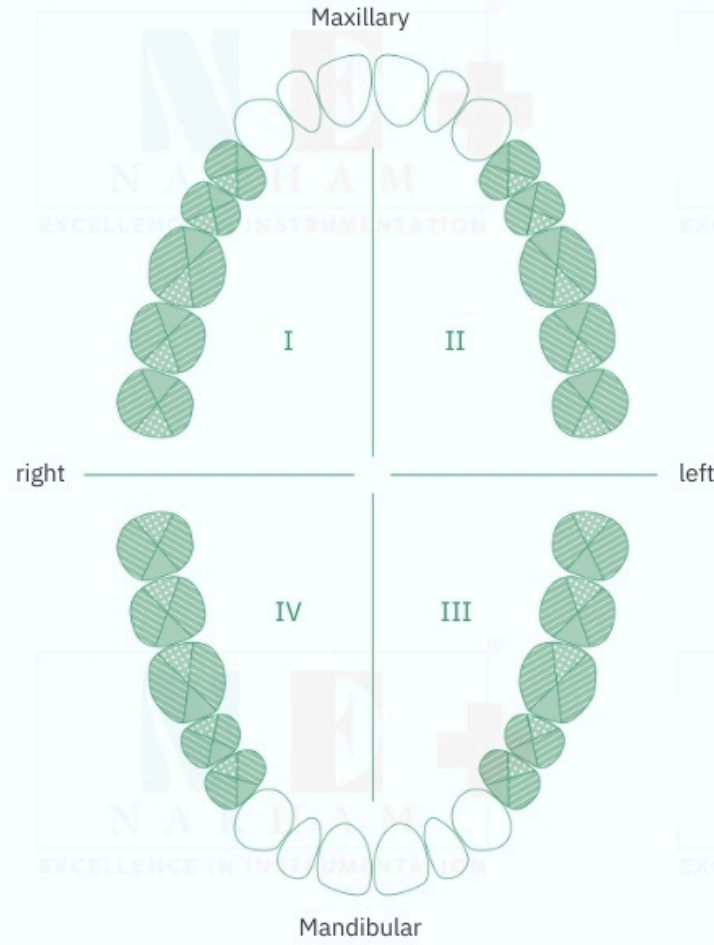
37/38 Jacquette
1831-38
ML60
MV1831-38
ML Light MV

1831-32



GRACEY USE CHART

- Anterior sextants of teeth
 - GRA 1/2 Incisors and Canines
 - GRA 3/4 Incisors and Canines
 - GRA 5/6 Anteriors and Premolars
- Buccal and lingual surfaces of posterior teeth
 - GRA 7/8 Premolars and Molars
 - GRA 9/10 Premolars and Molars
- Mesial surfaces of posterior teeth
 - GRA 11/12 Premolars and Molars
 - GRA 15/16 Premolars and Molars
- Distal surfaces of posterior teeth
 - GRA 13/14 Molars
 - GRA 17/18 Molars



MLWave Handles

- GRA 1/2
- GRA 3/4
- GRA 5/6
- GRA 7/8
- GRA 9/10
- GRA 11/12
- GRA 13/14
- GRA 15/16
- GRA 17/18

GRACEY CURETTES



| | | | | |
|---|---|--|---|---|
|  3/4 Gracey 1807-04 ML60 MV1807-04 ML Light MV ML1807-04 Leonardo ML LV1807-04/ LV1807-04SF Leonardo Light LV RC1807-04/ RC1807-04SF ● MLWave RC |  5/6 Gracey 1807-06 ML60 MV1807-06 ML Light MV ML1807-06 Leonardo ML LV1807-06/ LV1807-06SF Leonardo Light LV RC1807-06/ RC1807-06SF ● MLWave RCSF |  7/8 Gracey 1807-08 ML60 MV1807-08 ML Light MV ML1807-08 Leonardo ML LV1807-08/ LV1807-08SF Leonardo Light LV RC1807-08/ RC1807-08SF ● MLWave RC |  9/10 Gracey 1807-10 ML60 MV1807-10 ML Light MV ML1807-10/ O Leonardo ML LV1807- LV1807-10SF Leonardo Light LV RC1807-10/ RC1807-10SF ● MLWave RC |  11/12 Gracey 18 07-12 ML60 MV 1807- 12 ML Light MV M L1 8 07-12 Leonardo ML LV1807-12/ LV1807-12SF Leonardo Light LV RC1807-12/ RC1807-12SF ● MLWave RC |
|  1/2 Gracey LV1807-02SF Leonardo Light LV 1807-02 ML60 MV1807-02 ML Light MV ML1807-02 Leonardo ML LV1807-02 Leonardo Light LV RC1807-02/ RC1807-02SF ● MLWave RC |  13/14 Gracey 18 07-14 ML60 MV 1807- 14 ML Light MV M L1 8 07-14 Leonardo ML LV1807-14/ LV1807-14SF Leonardo Light LV RC1807-14/ RC1807-14SF ● MLWave RC |  15/16 Gracey 18 07-16 ML60 M L1 8 07-1 6 Leonardo ML LV1807- LV1807-16SF Leonardo Light LV RC1807-16/ RC1807-16SF ● MLWave RC |  17/18 Gracey 18 07-18 ML60 M L1 8 07-1 8 Leonardo ML LV1807- LV1807-18SF Leonardo Light LV RC1807-18/ RC1807-18SF ● MLWave RC |  11/14 Gracey Mesial-Distal 18 07-11 M D ML60 MV1807-11MD ML Light MV ML1807-11MD Leonardo ML LV1807-11MD Leonardo Light LV |
| |  12/13 Gracey Mesial-Distal 1807-13MD ML60 MV1807- 13MD ML Light MV ML1807- 13MD Leonardo ML LV1807- 13MD Leonardo Light LV | | | |

GRACEY CURETTES - AF

GRACEY CURETTES - MF

1/2 Gracey
LV1807-02AF
Leonardo Light LV
1807-02AF ML60
ML1807-02AF
Leonardo ML

3/4 Gracey 1807-04AF ML60
ML1807-04AF
Leonardo ML
LV1807-04AF
Leonardo Light LV

5/6 Gracey 1807-06AF ML60
ML1807-06AF
Leonardo ML
LV1807-06AF
Leonardo Light LV

7/8 Gracey 1807-08AF ML60
ML1807-08AF
Leonardo ML
LV1807-08AF
Leonardo Light LV

11/12 Gracey 1 8 07-12 A F ML60
ML1 8 07-12 A F
Leonardo ML
LV1807-12AF
Leonardo Light LV

13/14 Gracey 1 8 07-14 A F ML60
ML1 8 07-14 A F
Leonardo ML
LV1807-14AF
Leonardo Light LV

15/16 Gracey 1807-16AF ML60
ML1807-16AF
Leonardo ML
LV1807-16AF
Leonardo Light LV

3/4 Gracey 1807-04MF ML60
ML1807-04MF
Leonardo ML
LV1807-04MF
Leonardo Light LV

5/6 Gracey 1807-06MF ML60
ML1807-06MF
Leonardo ML
LV1807-06MF
Leonardo Light LV

7/8 Gracey 1807-08MF ML60
ML1807-08MF
Leonardo ML
LV1807-08MF
Leonardo Light LV

11/12 Gracey 1 8 07-12 M F ML60
ML1 8 07-12 M F
Leonardo ML
LV1807-12MF
Leonardo Light LV

13/14 Gracey 1 8 07-14 M F ML60
ML1 8 07-14 M F
Leonardo ML
LV1807-14MF
Leonardo Light LV

15/16 Gracey 1807-16MF ML60
ML1807-16MF
Leonardo ML
LV1807-16MF
Leonardo Light LV

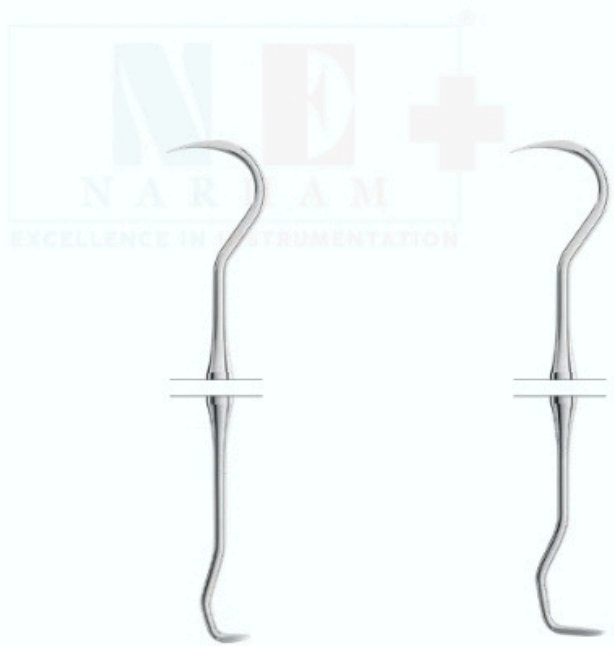
1/2 Gracey
LV1807-02MF
Leonardo Light LV
1807-02MF
ML60 ML1807-02MF
Leonardo ML

SCALERS

SCALERS

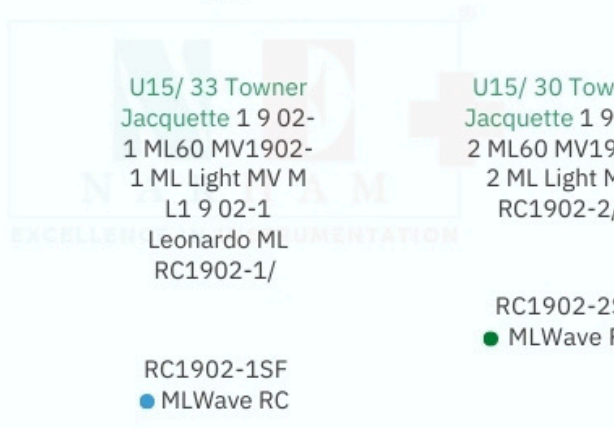


U15 Towner
ML1903
Leonardo ML
1903 ML60



M23 Universal
Scaler 1900-
M23 ML60
ML1900-M23
Leonardo ML

RC1900-M23/
RC1900-M23SF
● MLWave RC



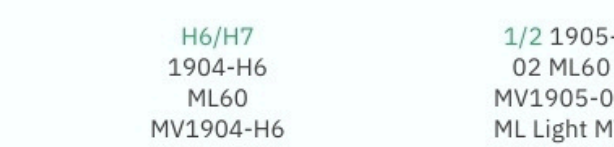
RC1902-1SF
● MLWave RC



H5/ 33 Towner
Jacquette 1 9 02-
1 ML60 MV1902-
1 ML Light MV M
L1 9 02-1
Leonardo ML
RC1902-1/
RC1902-2SF
● MLWave RC



H6/H7
1904-H6
ML60
MV1904-H6
ML Light MV
RC1904-H6/
RC1904-H6SF
● MLWave RC



1/2 1905-
02 ML60
MV1905-02
ML Light MV



1
1901-
1
ML60



1L left
1900-1L
ML60



1R right
1900-1R
ML60



2L left
1900-2L
ML60



2R right
1900-2R
ML60



H5 Hygienist
1909-H5
ML60



H6 Hygienist
1909-H6
ML60



H7 Hygienist
1909-H7
ML60



1 Jacquette
ML1906-1
Leonardo ML



2 Jacquette
ML1906-2
Leonardo ML



3 Jacquette
ML1906-3
Leonardo ML

33
1906-33
ML60

PERIOSTEALS AND ELEVATORS



PERIOSTEALS AND ELEVATORS



PERIOSTEALS AND ELEVATORS

PERIOSTEALS AND ELEVATORS



2 mm

2.5 mm
17 cm
PR1850-1
Perfection

22 Seldin
retractor
1855-22



23 Seldin
retractor
1855-23



König
15.5 cm
1858-1



Williger
17 cm
1856-1



Williger
16 cm
1856-2



Williger
16 cm
1857-1



Williger
13 cm
1857-2

BONE CURETTES

1.8 mm

2.2 mm

2.9 mm

3.4 mm

5 mm

2.6 mm

3.2 mm

3.4 mm

1 Hemingway
2000-1
ML60
MV2000-1
ML Light MV
ML2000-1
Leonardo ML

2 Hemingway
2000-2 ML60
MV2000-2
ML Light MV
ML2000-2
Leonardo ML

3 Hemingway
2000-3 ML60
MV2000-3
ML Light MV
ML2000-3
Leonardo ML

4 Hemingway
2000-4 ML60
MV2000-4
ML Light MV
ML2000-4
Leonardo ML

85 Lucas
2001-85
ML60
MV2001-85
ML Light MV
ML2001-85
Leonardo ML
RC2001-85
● MLWave RC

86 Lucas
2001-86
ML60
MV2001-86
ML Light MV
ML2001-86
Leonardo ML
RC2001-86
● MLWave RC

87 Lucas
2001-87
ML60
MV2001-87
ML Light MV
ML2001-87
Leonardo ML
RC2001-87
● MLWave RC

88 Lucas
2001-88
ML60
MV2001-88
ML Light MV
ML2001-88
Leonardo ML
RC2001-88
● MLWave RC

BONE CURETTES

3 mm

3 mm

2.5 mm

3.5 mm

2.5 mm

3.5 mm

3.5 mm

3.5 mm

3.5 mm

3.5 mm

3.5 mm

3.5 mm

3.5 mm

00/0 Williger
14 cm
2015-00

0/1 Williger
14 cm
2015-0

00/0
14 cm
2016-00

1/2 Williger
14 cm
2015-1

1/2
14 cm
2016-1

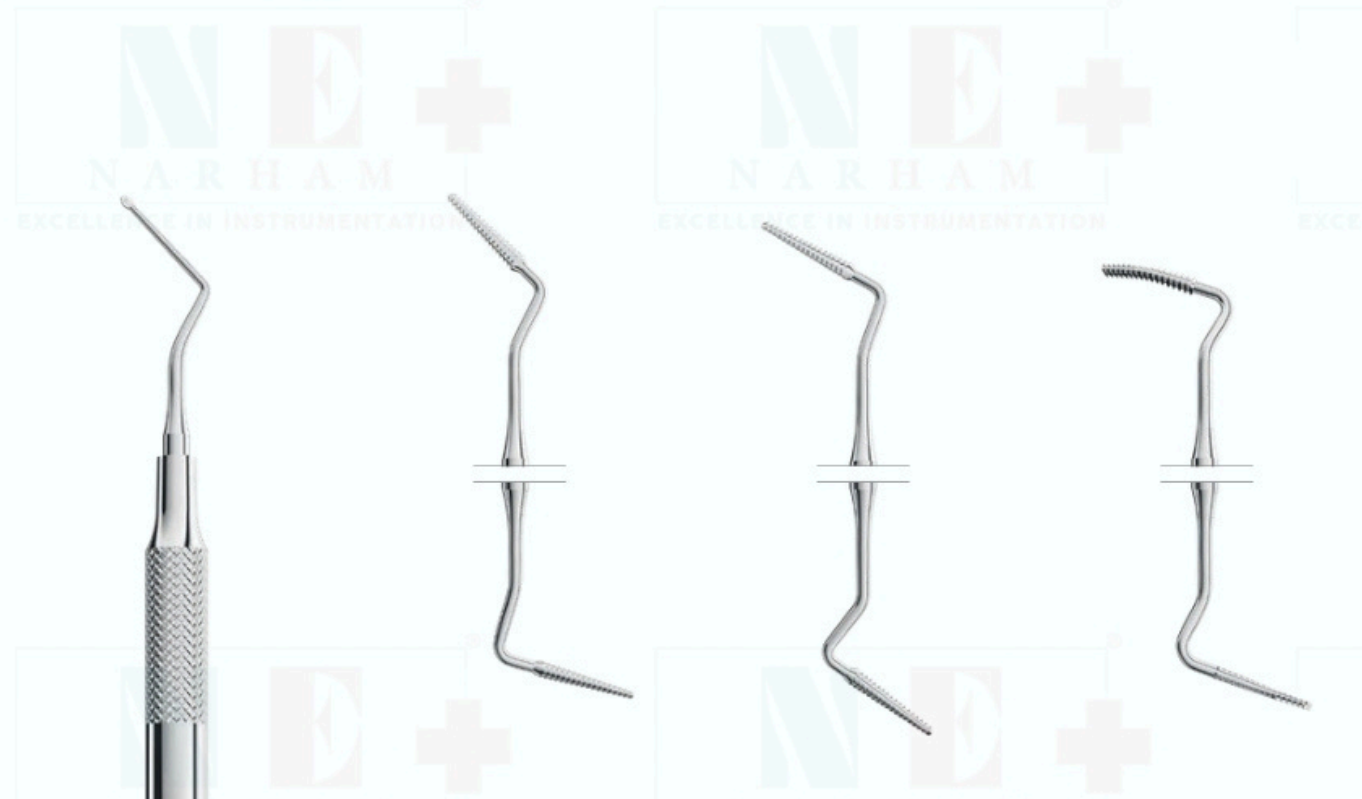
2
U.S.A. pattern
16 cm
2013-2

2L
U.S.A. pattern
16 cm
2013-2L

2R
U.S.A. pattern
16 cm
2013-2R

FILES

BONE FILES

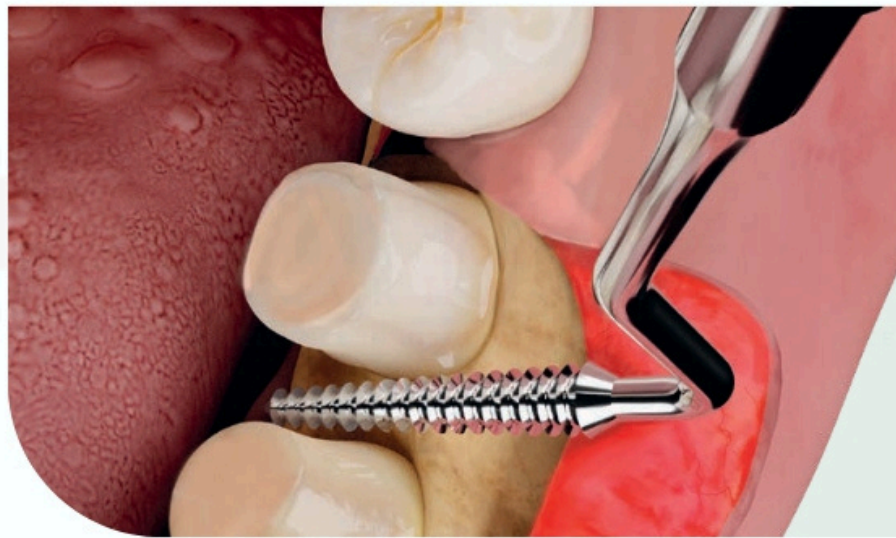


1S/2S Sugarman
1812-02S ML60
MV1812-02S ML
Light MV

3S/4S Sugarman
1812-04S ML60
MV1812-04S ML
Light MV

9/10 Schluger
1813-10
ML60
MV1813-10
ML Light MV

1812-04S



3/7 Hirschfeld
1810-07
ML60
MV1810-07
ML Light MV



33
2004-33

45 Miller
2005-45

64 Miller
2005-64

10
2006-10



1 Polokoff
2003-1



12 Howard
2008-12



12A
2007-12A



12CA
2007-12CA



1 Wahl
MV2002-1
ML Light MV



2 Wahl
MV2002-2
ML Light MV

GINGIVECTOMY KNIVES

1 (15K) Kirkland
1803-1 ML60

2 (16K) Kirkland
1803-2 ML60

1 Orban
1804-1
ML60

2 Orban
1804-2
ML60

1/2 (15K/16K) Kirkland
1803-D ML60 MV1803-
D ML Light MV ML1803-
D Leonardo ML

5/6 Buck
1816-06
ML60
ML1816-06
Leonardo ML

1/2 Orban
1804-D
ML60
MV1804-D
ML Light MV
ML1804-D
Leonardo ML

GINGIVECTOMY KNIVES

7 Goldman-Fox
1815-7 ML60

8 Goldman-Fox
1815-8 ML60

9 Goldman-Fox
1815-9 ML60

11 Goldman-Fox
1815-11
ML60

3/4 Buck
1816-04
ML60

19/ 20
(University of
South California)
USC Towner
1818-20 ML60

CK3 Crane-Kaplan
1819-CK3 ML60

CHISELS

BONE CHISELS AND GOUGES



4 Ochsenshein
1802-4 ML60
MV1802-4 ML
Light MV



36/37 Rhodes
back-action
1811-37
ML60
MV1811-37
ML Light MV



3 Ochsenshein
1802-3 ML60
MV1802-3
ML Light MV



1 TG Chisel
1801-1
ML60



2 TG Chisel
1801-2
ML60



1/2 TG Chisel
1801-D ML60
MV1801-D
ML Light MV



1 Ochsenshein
1800-1



2 Ochsenshein
1800-2

1 Gardner
1832-1

2 Gardner
1832-2



6 Gardner
1832-6

1W Wakefield
1833-1W

2W Wakefield
1833-2W



5 Gardner
1832-5

5R Gardner
1832-5R



3 Buckley
1834-3

17 cm
PR1801-1
Perfection

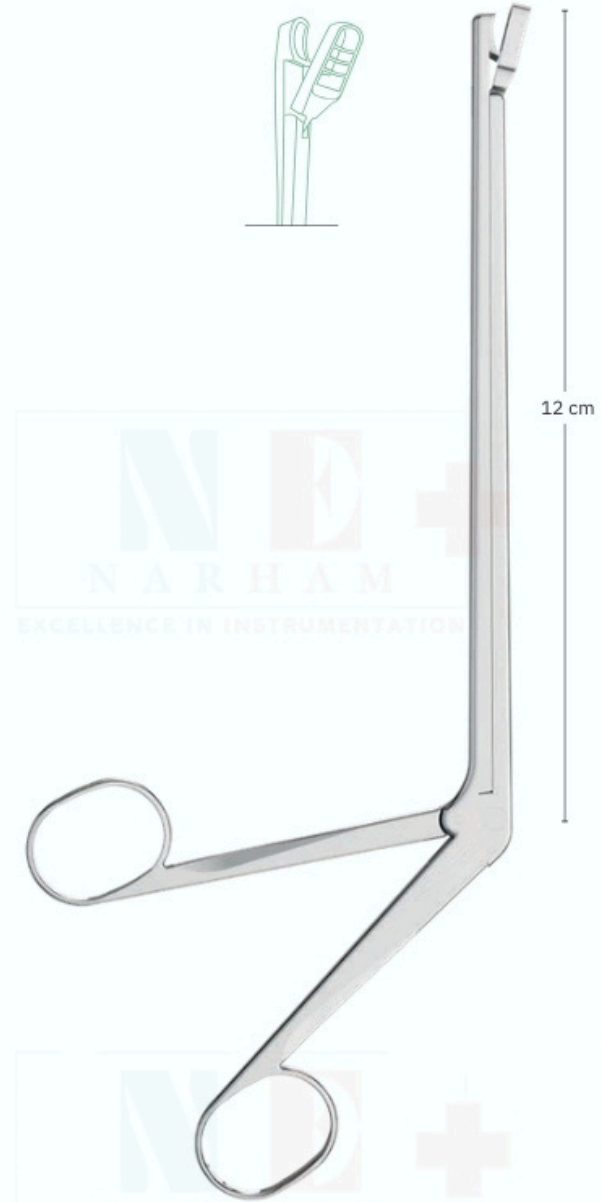
BONE CHISELS AND GOUGES



SURGICAL MALLET



PERIODONTAL INSTRUMENTS



Tomati
19 cm
0103-78
gum guillotine
forceps

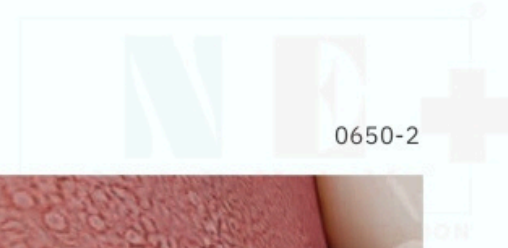


Goldman-Fox
10 cm
0103-60
bone/soft tissue nipper with
small beaks for use in limited
access areas



Mini Friedman
12 cm
0103-25
bone rongeur

PERIODONTAL POCKET MARKERS



0650-2



1 (Crane-Kaplan)
Goldman-Fox
15 cm
0650-1

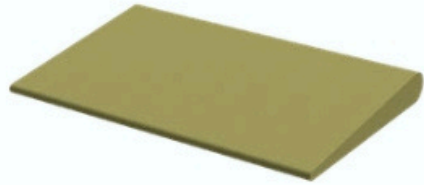


2 (Crane-Kaplan)
Goldman-Fox
15 cm
0650-2

GRINDING STONES

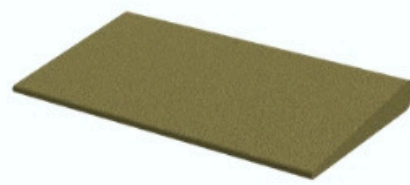
Corundum grindingstone
India, beige, for sharpening very blunt instruments

75 x 45 x 2-7 mm



fine grain
1890-1F

75 x 45 x 2-7 mm



medium grain
1890-1M

75 x 25 x 7 mm



1890-2

grayish-white "Arkansas" grinding stone, for repeated sharpening of scalers and currettes as well as for finishing.

100 x 25 x 10 mm



1890-3

white Super "Arkansas" grinding stone, currettes as well as for finishing, for repeated sharpening of scalers and

102 x 26 x 5-10 mm



1890-4

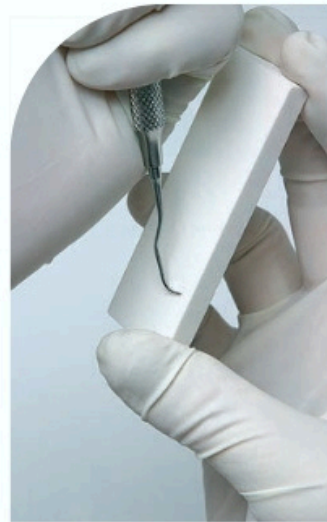
Arkansas grinding stone, convex file, for finishing.

100 mm x Ø 6 mm



1890-5

dark beige India Corundum grinding stone, round file, for deburring working ends.



GRINDING STONES

100 mm x max Ø 10 mm



1890-6

greyish-white "Arkansas" grinding stone, round file, for deburring working ends.

102 x 8 mm - 15 x 2 - 6 mm



1890-7

green silicon carbide grinding stone, tapered, for deburring working ends.



100 mm x max Ø 10 mm



1891-1

plexiglass test rod for checking sharpness of scalers and currettes
6 pcs / bag.



KIT OF GRACEY CURETTES



| Model | Set Code | Handle |
|--------------|----------|--------|
| 08 · 12 · 14 | S1807-3 | ML60 |



| Model | Set Code | Handle |
|--------------------|-----------|--------|
| 08AF · 12AF · 14AF | S1807AF-3 | ML60 |



| Model | Set Code | Handle |
|--------------------|-----------|--------|
| 08MF · 12MF · 14MF | S1807MF-3 | ML60 |



| Model | Set Code | Handle |
|----------------------------------|----------|----------------|
| 02 · 04 · 06 · 08 · 10 · 12 · 14 | S1807 | ML60 ML |
| 02 · 04 · 06 · 08 · 10 · 12 · 14 | SMV1807 | Light MV |
| 02 · 04 · 06 · 08 · 10 · 12 · 14 | SML1807 | Leonardo ML |
| 02 · 04 · 06 · 08 · 10 · 12 · 14 | SLV1807 | Leonardo Light |
| 02 · 04 · 06 · 08 · 10 · 12 · 14 | SRC1807 | LV MLWave RC |



| Model | Set Code | Handle |
|--|-----------|-------------------|
| 02AF · 04AF · 06AF · 08AF · 12AF · 14AF · 16AF | S1807AF | ML60 |
| 02AF · 04AF · 06AF · 08AF · 12AF · 14AF · 16AF | SML1807AF | Leonardo ML |
| 02AF · 04AF · 06AF · 08AF · 12AF · 14AF · 16AF | SLV1807AF | Leonardo Light LV |



| Model | Set Code | Handle |
|--|-----------|-------------------|
| 02MF · 04MF · 06MF · 08MF · 12MF · 14MF · 16MF | S1807MF | ML60 |
| 02MF · 04MF · 06MF · 08MF · 12MF · 14MF · 16MF | SML1807MF | Leonardo ML |
| 02MF · 04MF · 06MF · 08MF · 12MF · 14MF · 16MF | SLV1807MF | Leonardo Light LV |

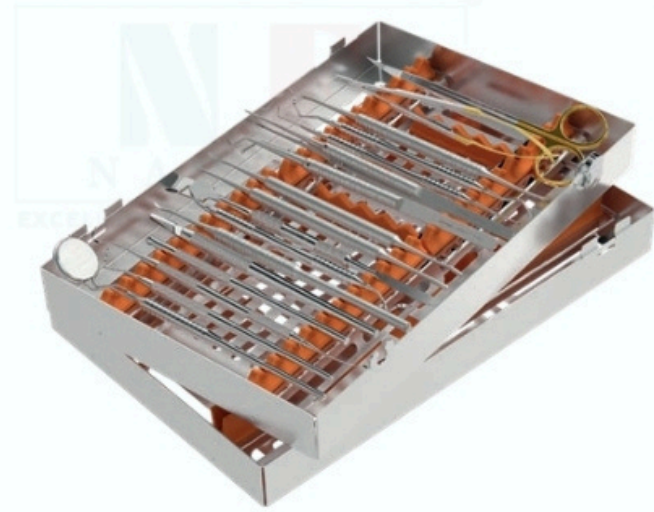
INSTRUMENT KIT FOR PERIODONTOLOGY



S1899

| | | |
|----------|---|-----------|
| 0304-2 | Goldman-Fox gum scissors curved, | 2 |
| 0650-1 | sawed edge Goldman-Fox periodontal pocket marker, | 1 |
| 0650-2 | right side Goldman-Fox periodontal pocket marker, | 2 |
| 0703L-1 | left side Williams periodontal pocket probe | 15K / 16K |
| 1803-D | Kirkland gingivectomy knife | 1/2 |
| 1807-06 | Orban gingivectomy knife | 5/6 |
| 1807-12 | Gracey curette | 11/ 12 |
| 1807-14 | Gracey curette | 13/ 14 |
| 1809-1 | Gracey curette | 1 |
| 1816-06 | Goldman-Fox Universal scaler Buck | 5/6 |
| 1825-14 | gingivectomy knife Mc Call scaler | 13/ 14 |
| 1829-CK6 | Crane-Kaplan scaler Towner scaler | 6 |
| 1903 | MV1850-M9Molt periosteal elevator | U15 M9 |

PERIODONTAL INSTRUMENTS



Periodontal surgery kit
SPR2781-P

| | | |
|-------------|---|---------|
| ML2101 | mouth mirror handle | |
| 2230-5 | double sided mouth mirrors | 5 |
| 07 02 L-1 5 | periodontal pocket probes | CP-15 |
| 0708L-2N | double-ended periodontal pocket probes | 2N |
| 0365-1 | micro-blade holder | |
| 0350-5 | scalpel handle and blade exciser | 5 |
| PR1857-1 | Orban gingivectomy knife | 1/2 |
| ML1804-D | Prichard periosteal periosteal elevator | PR3 |
| MV1851-PR3 | periosteal elevator | |
| PR1850-M | periosteal elevator | |
| PR1850-1 | tissue pliers | |
| PR0625-3 | atraumatic tissue pliers | |
| PR0632-1 | periodontal instrument | |
| ML1806-2RL | periodontal instrument | 2R / 2L |
| ML1806-4RL | small bone chisel | 4R/4L |
| PR1801-1 | Castroviejo needle holder | |
| PR0460-15TC | gum scissors | |
| 0309-2TC | instrument tray | 2TC |
| 2780-1A | | |

PERIODONTAL INSTRUMENTS



S3003-11

| | | |
|------------|---|-----|
| 0350-3 | scalpel handle Sternberg | 3 |
| 2 6 02-1 | retractor Goldman-Fox | |
| 0304-2 | scissor Molt periosteal | 2 |
| MV1850-M9 | Prichard periosteal Crile | M9 |
| MV1851-PR3 | Wood needle holder | PR3 |
| 0415-15TC | Semken Taylor tissue plier | |
| 0631-1 | explorer with an anatomic handle | 1 |
| 0700-23 | mouth mirror handle | 23 |
| 2102-IN | scalpel blades (100 pcs) | |
| 2200-5 | perforated instrument tray complete with insert frame | 5 |
| 0351-11 | | 11 |
| S2722-1 | | |



Periodontal first examination kit
S0600-1

| | | |
|-----------|---|-------|
| 2102-IN | mouth mirrors handle | |
| 2200-4 | plane mouth mirror | 4 |
| 0704- | double-ended explorer | 23/17 |
| 23D1 | periodontal pocket probe | 1N |
| 0708-1N | periodontal pocket probe | CP-12 |
| 07 02 L-1 | London-College cotton and dressing pliers | 2 |
| 2 0601-2 | | |
| S2702 | perforated instrument tray complete with insert frame | |



S3003-9

| | | |
|-------------|---|---------|
| MV1850-M9 | Molt periosteal Prichard | M9 |
| MV1851-PR3 | periosteal Goldman-Fox | PR3 |
| MV1850-GF | periosteal Kirkland knife | GF |
| MV1803-D | Mead mallet Castroviejo | 15K/16K |
| 1881 | needle holder Mathieu | |
| 0446TH-14TC | needle holder scalpel handle | |
| 0435-17TC | perforated instrument tray complete with insert frame | 3 |
| 0350-3 | | |
| S2722-1 | | |